



ExpressBox 3T

User Manual

Thunderbolt™ to PCIe Expansion



Model: EB3T and EB3T with Storage Bays

Table of Contents

Preface	4
Advisories	4
Safety Instructions	5
Chapter 1 Introduction	7
PCI Express Features	7
Thunderbolt Features	7
Specifications	8
Pre-Installation Information	8
Parts List	8
Tools Required for Installation	9
Chapter 2 Hardware Installation	10
Open Enclosure	10
Install PCIe Cards	11
Extra Power	12
Blower	13
Connect Cables and Turn On	13
Control Fan Speed	15
Daisy Chaining	15
Attaching Displays	16
Storage Drive Installation	16
Controller Card Installation	23
How to Configure SAS / SATA Raid	24
Chapter 3 Verify Installation	32
Hardware	32
Thunderbolt™ 1 Interface Card	32
Thunderbolt™ 2 Interface Card	34
Backplane	37
Software	38
How to check Magma device - Mac OS X	38
How to Check Magma Device - Windows 7 and 8	40
How To Check PCIe cards - Mac OS X	41
Thunderbolt Aware Driver is required for PCIe cards	42
How to Check PCIe cards – Windows 7 and 8	44

Troubleshooting	46
Chapter 4 How to Get More Help	50
Contacting Technical Support	50
Returning Merchandise to MAGMA	50

Preface

Advisories

Five types of advisories are used throughout this manual to provide helpful information, or to alert you to the potential for hardware damage or personal injury.

**NOTE**

Used to amplify or explain a comment related to procedural steps or text.

**IMPORTANT**

Used to indicate an important piece of information or special "tip" to help you

**CAUTION**

Used to indicate and prevent the following procedure or step from causing damage to the equipment.

**WARNING**

Used to indicate and prevent the following step from causing injury.

**DANGER or STOP**

Used to indicate and prevent the following step from causing serious injury or significant data loss

Disclaimer: We have attempted to identify most situations that may pose a danger, warning, or caution condition in this manual. However, Magma does not claim to have covered all situations that might require the use of a Caution, Warning, or Danger indicator.

Safety Instructions

Always use caution when servicing any electrical component. Before handling the Magma Expansion chassis, read the following instructions and safety guidelines to prevent damage to the product and to ensure your own personal safety. Refer to the “Advisories” section for advisory conventions used in this manual, including the distinction between Danger, Warning, Caution, Important, and Note.

- § Always use caution when handling/operating the computer. Only qualified, experienced, authorized electronics personnel should access the interior of the computer and expansion chassis per UL and IEC 60950-1
- § The power supplies produce high voltages and energy hazards, which can cause bodily harm.
- § Use extreme caution when installing or removing components. Refer to the installation instructions in this manual for precautions and procedures. If you have any questions, please contact Magma Technical Support.



Warning

WARNING

Never modify or remove the radio frequency interference shielding from your workstation or expansion unit. To do so may cause your installation to produce emissions that could interfere with other electronic equipment in the area of your system.

When Working Inside a Computer

1. Before taking covers off a computer, perform the following steps:
2. Turn off the computer and any peripheral devices.
3. Disconnect the computer and peripheral power cords from their AC outlets or inlets in order to prevent electric shock or system board damage.

In addition, take note of these safety guidelines when appropriate:

- § To help avoid possible damage to systems boards, wait five seconds after turning off the computer before removing a component, removing a system board, or disconnecting a peripheral device from the computer.
- § When you disconnect a cable, pull on its connector or on its strain-relief loop, not on the cable itself. Some cables have a connector with locking tabs. If you are disconnecting this type of cable, press in on the locking tabs before disconnecting the cable. As you pull connectors apart, keep them evenly aligned to avoid bending any connector pins. Also, before connecting a cable, make sure both connectors are correctly oriented and aligned.



Caution

CAUTION

Do not attempt to service the system yourself except as explained in this manual. Follow installation instructions closely.

Protecting Against Electrostatic Discharge



Electrostatic Discharge (ESD) Warning

Electrostatic Discharge (ESD) is the enemy of semiconductor devices. You should always take precautions to eliminate any electrostatic charge from your body and clothing before touching any semiconductor device or card by using an electrostatic wrist strap and/or rubber mat.

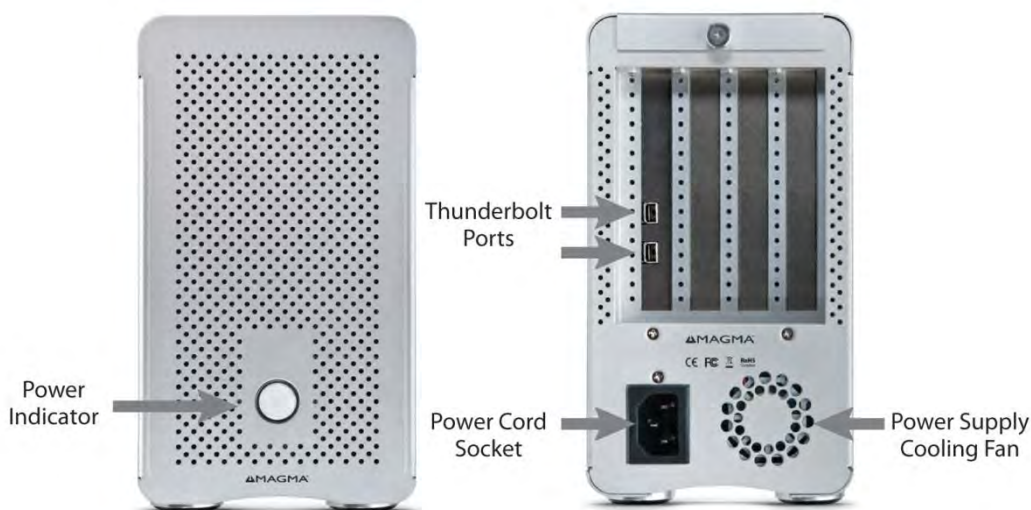
Static electricity can harm system boards. Perform service at an ESD workstation and follow proper ESD procedures to reduce the risk of damage to components. Magma strongly encourages you to follow proper ESD procedures, which can include wrist straps and smocks, when servicing equipment.

You can also take the following steps to prevent damage from electrostatic discharge (ESD):

- When unpacking a static-sensitive component from its shipping carton, do not remove the component's anti-static packaging material until you are ready to install the component in a computer. Just before unwrapping the anti-static packaging, be sure you are at an ESD workstation or are grounded.
- When transporting a sensitive component, first place it in an anti-static container or packaging.
- Handle all sensitive components at an ESD workstation. If possible, use anti-static floor pads and workbench pads.
- Handle components and boards with care. Don't touch the components or contacts on a board. Hold a board by its edges or by its metal mounting bracket.

Chapter 1 Introduction

ExpressBox 3T provides an 'outside-the-box' solution for using PCIe® cards with Thunderbolt-equipped computers. High-performance work flows are possible by connecting a Thunderbolt equipped computer to a Magma ExpressBox 3T containing PCIe cards such as video capture, media transcoding, audio processing, and fast data storage. And because Thunderbolt is also based on DisplayPort technology, you can daisy chain a high-resolution display with your Magma ExpressBox 3T. Thunderbolt cable is sold separately.



Note: ExpressBox 3T requires a Thunderbolt cable (sold separately)

PCI Express Features

- Supports three full-length cards
- This chassis includes a PCI Express Gen 2 switch. Any two x4 ports, can merge to form an 8-lane port. Therefore, the x8 connector is used twice which allows slot 3 to be 8-lanes or slot 3 to be 4-lanes and slot 4 to be 4-lanes.
- The total PCIe lanes for all 3 slots are 16 lanes. Combinations can be:
 - § X8, x8
 - § X8, x16 – note: the x16 will run at x8 speed
 - § X8, x4, x4
 - § X8, x8, x4 – note: the second x8 will only run at x4 speed
 - § X8, x16, x4 – note: the x16 will only run at x4 speed

Thunderbolt Features

- High-speed Thunderbolt connection – 10Gbps for Thunderbolt™ 1. 20Gbps for Thunderbolt™ 2
- Dual channel, with support for PCIe and DisplayPort protocols
- Automatic power-up control by computer
- Daisy-chain or end-point device

Specifications

Item	Description
Technology	PCI Express Bus Specification Revision 2.0 PCI Local Bus Specification Revision 2.3 PCI Bridge Architecture Revision 1.2
Backplane	(3) Full length PCI Express Slots -two x8 PCIe 2.0 -one x4 PCIe 2.0
Thunderbolt™ 1, Interconnect Bandwidth	10Gbps (1.25 GB/s) Bi-directional
Thunderbolt™ 2, Interconnect Bandwidth	20Gbps (2.50 GB/s) Bi-directional
Enclosure	Aluminum Chassis 14.6"W x, 4.3"H x 7.9"H (371mm x 110mm x 200mm)
System Cooling	(1) Hot Swappable Fan (1) Removable Blower Fan
Power Supply Options	250 Watt 100-240 VAC, 50-60 Hz Power Input Two 4-pin auxiliary power tabs
Environmental	Ambient Temperature 0° to 50° C Storage Temperature -20° to 60° C Relative Humidity 5% to 85% non-condensing
MTBF	50,000
Regulatory Compliance	FCC Class A Verified CE RoHS Compliant
Thunderbolt™ 1, Supported Operating Systems	MacOS 10.6.8 or higher
Thunderbolt™ 2, Supported Operating Systems	MacOS 10.9 or higher (not supported 10.8 below)
Warranty	30 day money back guarantee 1 year return to factory

Pre-Installation Information

Before using the Magma Expansion chassis you should perform the following steps:

- Inventory the shipping carton contents for all of the required parts
- Gather all of the necessary tools required for installation
- Read this manual

Parts List

Qty	Item
1	ExpressBox 3T - Three Slot PCIe Expansion Chassis
1	Fan Blower
1	Carry Bag
1	U.S. Standard 115V Power Cord

EB3T – Front and Rear View

1. Power Indicator
2. PCIe card slot openings
3. Thunderbolt ports
4. Power cord socket

Hardware Included

5. Blower (if needed for cooling)
6. Carry Bag
7. U.S. Power Cord



Tools Required for Installation

To complete the installation of the Magma product you will need a Phillips-head screwdriver and ESD wrist strap to prevent electrostatic discharge.



Chapter 2 Hardware Installation

The following steps will guide you through the installation of your Magma Expansion System.



CAUTION

Hardware installation shall be performed only by qualified service personnel per UL and IEC 60950-1.



Electrostatic Discharge (ESD) Warning

All add-in cards are susceptible to electrostatic discharge. When moving cards, it is best to carry the cards in anti-static packaging. If you need to set a circuit card down, be sure to place it inside or on top of an anti-static surface. For more information, see "[Protecting Against Electrostatic Discharge](#)" in the Preface.



WARNING

High voltages are present inside the expansion chassis when the unit's power cord is plugged into an electrical outlet. Disconnect the power cord from the AC outlet before removing the enclosure cover. Turning the system power off at the power on/off switch does not remove power to components. High voltage is still present.



CAUTION

Before touching anything inside the enclosure, move to an ESD station and follow proper ESD procedures. Failure to do so may result in electrostatic discharge, damaging the computer or its components. For more information, see "[Protecting Against Electrostatic Discharge](#)" in the Preface.

Open Enclosure

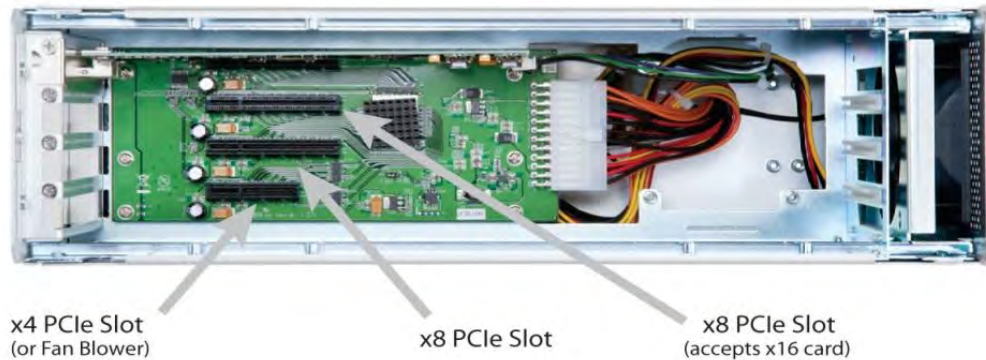
Loosen the thumbscrew that retains the top cover of the chassis and slide the lid towards you as shown below:



Install PCIe Cards

Some card manufacturers recommend that you install their software driver prior to installing the card. If this is the case, be sure to install the card driver before connecting ExpressBox 3T to the computer.

- Slot 1 accepts x1 or x4 PCIe cards or the provided Fan Blower
- Slot 2 accepts x1, x4 or x8 PCIe cards
- Slot 3 accepts all types of PCIe cards x1, x4, x8 or x16 (next to Thunderbolt interface card)



Note: If your PCIe card runs hot or requires more than 20 Watts of power, we recommend use of the provided Fan Blower in the x4 PCIe slot. Use caution if using all three PCIe slots. Check for heat with only two cards first.

Make sure that all cards are fully seated in their connectors. When correctly seated, there will be a firm resistance when you pull up gently on the card. To keep the cards in place, secure them in the enclosure with their retaining screws.

After securing the cards verify that they do not touch each other.



NOTE

If at all possible, plug all power cords from the expansion chassis and your host computer into a shared power strip, preferably one that has surge and noise suppression circuitry built into it.



WARNING

Do not remove or disconnect any cables from Thunderbolt interface card inserted in the ExpressBox 3T chassis. Doing so **WILL** disable functionality.

Extra Power

Some PCIe cards require extra power. There are two 4 pin AUX power connectors that can be used for providing extra power to cards.



If you need to add another 4 pin AUX tab you can connect an AUX Y splitter



IMPORTANT

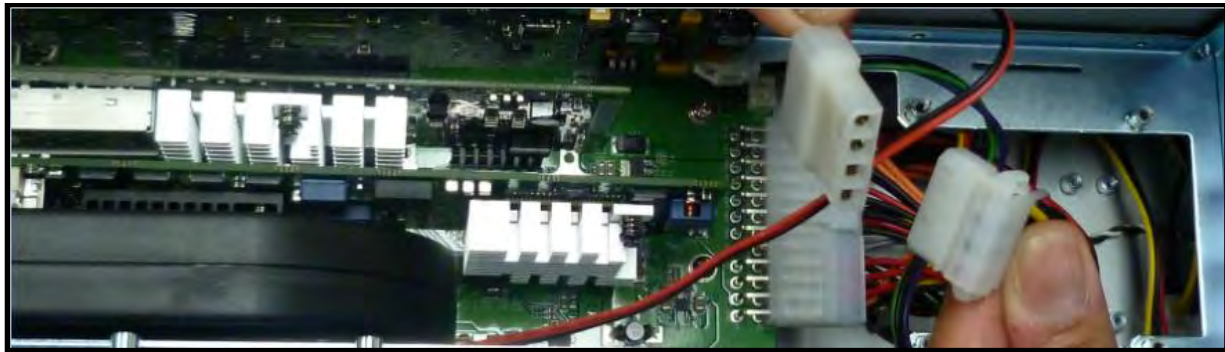


Y cable is only shipped / included with First generation (pre production) of EB3T expansion units that have one Auxiliary Power cable. This is applicable to EB3T Units with Date Code MG211A111XXXX.

Second batch of EB3T expansion units with Date Code MG211A1202 (and above) have already 2 Auxiliary power cables (built-in). These are two 4pin Male molex connectors. **NOTE: The Y Splitter is no longer included with these units.**

Blower

If the PCIe cards run hot or are over 20 watts of power, Magma recommends installing the blower in the x4 Slot of ExpressBox 3T. Use caution if loading three cards at once. Check for heat with two cards first.



CAUTION

Before touching anything inside the enclosure, be sure unit has been off and is cool. Beware of touching anything in chassis if unit has been on.

Connect Cables and Turn On

Plug in power cord to ExpressBox 3T.

Attach Thunderbolt cable into either top or bottom port on the ExpressBox 3T. Plug in Display Monitor, DVI/HDMI, or Display. If no display will be used, you can daisy chain other Thunderbolt devices. Plug in the other end of the Thunderbolt cable to the Thunderbolt port on the computer.

Connect a Thunderbolt cable to one of the ports on the back of Magma product to the Thunderbolt port on your computer. You can use the second Thunderbolt port to connect to another Thunderbolt device or a mini DisplayPort device.



ExpressBox 3T will automatically turn ON when the computer is turned ON. A BLUE light will shine when the expansion chassis is ON. ExpressBox 3T will automatically turn OFF when the computer is turned OFF or goes into SLEEP mode.

If either end of the Thunderbolt cable is removed while the system is ON, the expansion chassis will automatically power down.



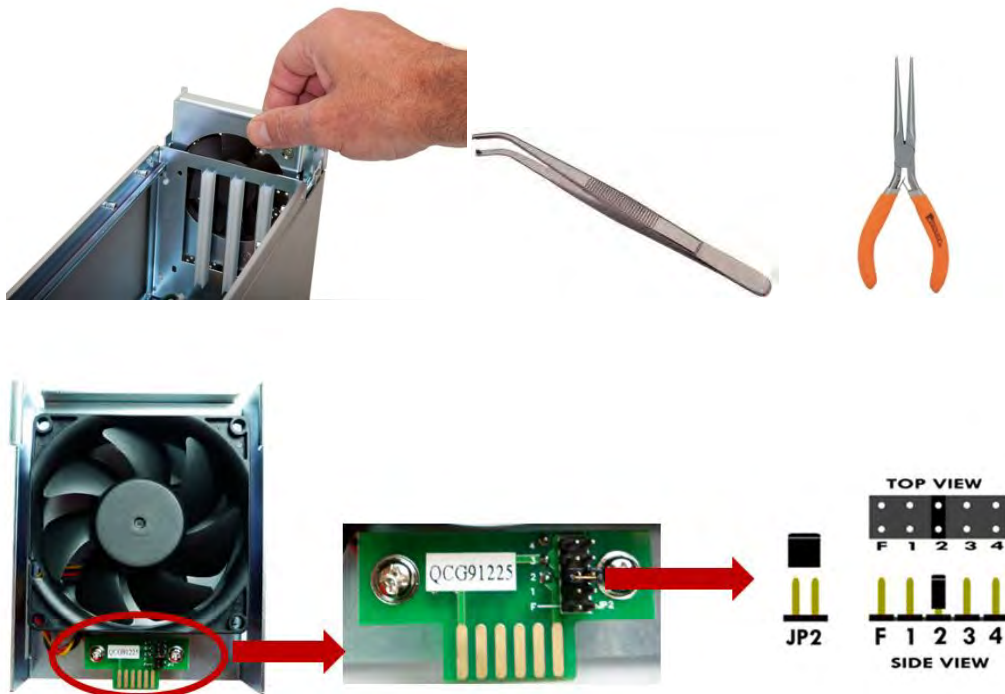
Note: ExpressBox 3T does not have ON/OFF switch. The BLUE LED on the front is an INDICATOR, not a power SWITCH. To turn ON the expansion chassis, connect to a Thunderbolt equipped computer.

The Blue light on the front of ExpressBox 3T is not an on off push button, it simply indicates whether the chassis is on or off. If either end of the Thunderbolt cable is disconnected, ExpressBox 3T will automatically turn off.

Control Fan Speed

For low power or self-cooled cards you can reduce the fan noise by moving the jumper found under the removable cooling fan at the front of the chassis to the slowest speed setting. If the chassis gets hot during use, you should increase the fan speed to provide more cooling.

You will need a pair of needle nose pliers or a similar tool used for grabbing small jumpers. Remove the fan cage at the front of the chassis and you will see a small board as shown below.



The Factory Default is setting 2 (medium). The slowest speed is setting 4 and the fastest speed is setting F.

F = fastest	1 = fast	2 = medium (default)	3 = slow	4 = slowest
-------------	----------	----------------------	----------	-------------

Daisy Chaining



IMPORTANT

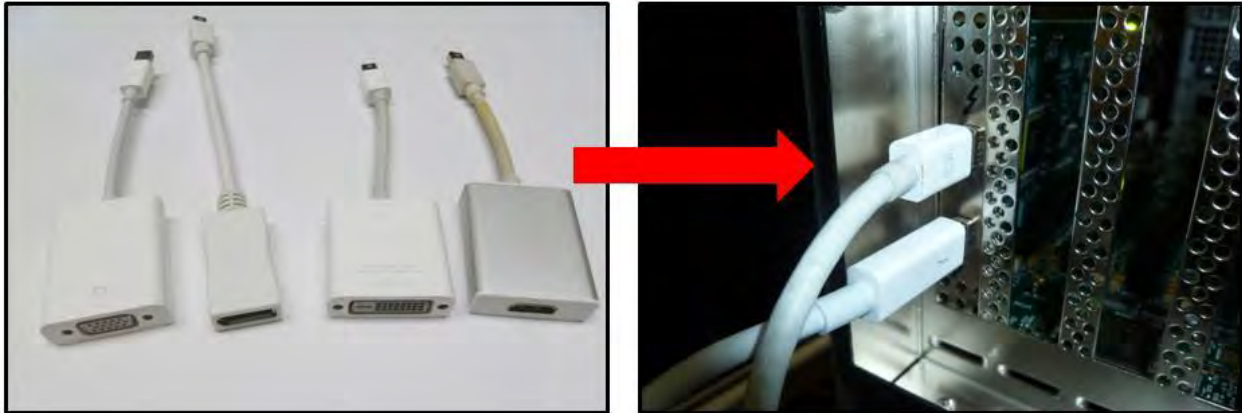
For best performance, it is recommended that ExpressBox 3T be the first device in the Thunderbolt Daisy-chain.

Attaching Displays

You can use an appropriate Display Port connector to add a Display Port, HDMI, DVI, or VGA Display.

The Display Port connector can plug into the other Thunderbolt port on ExpressBox 3T

Make sure your display is plugged in and the appropriate adapter is connected.

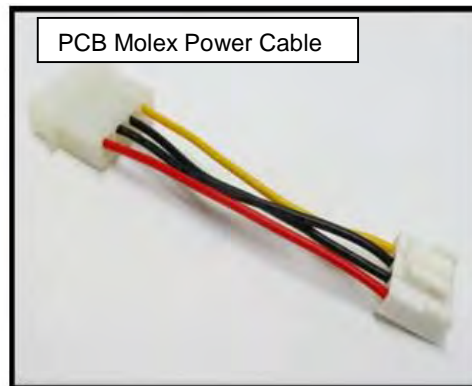
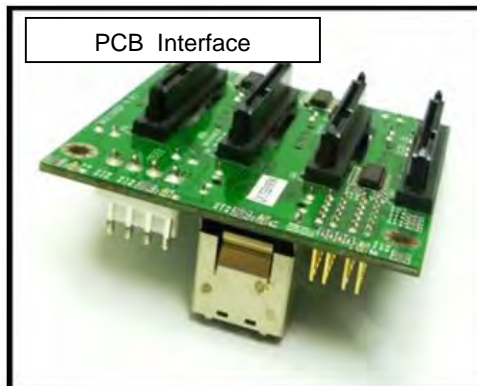


Storage Drive Installation

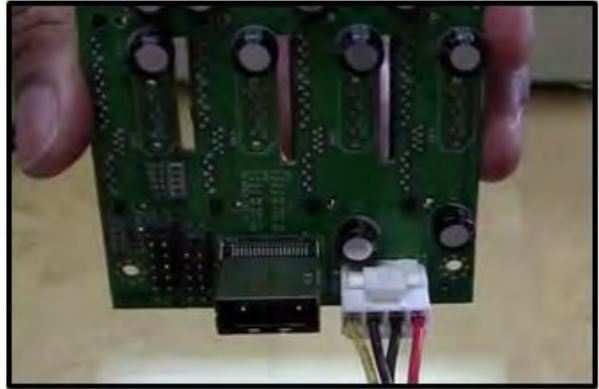
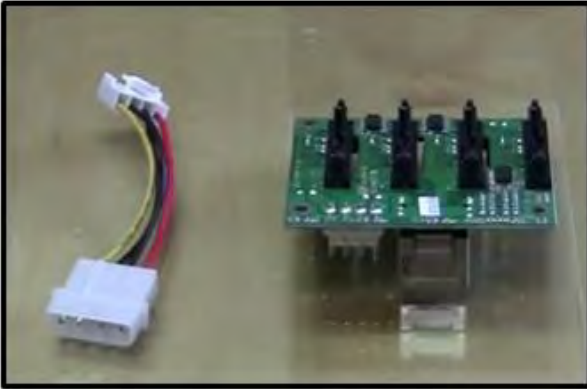
You need a "Storage Kit" as shown from the picture below for storage drives upgrade.



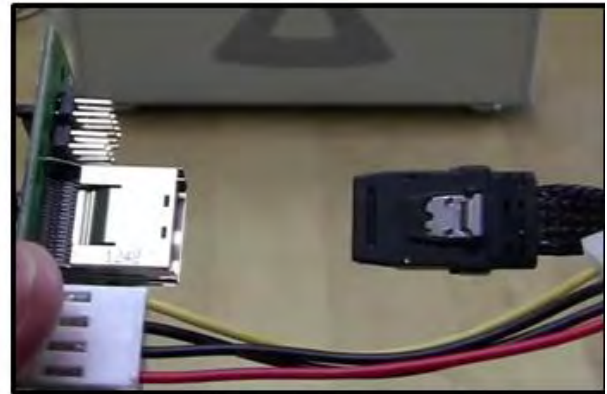
The "Storage Kit" is composed of the following items:



1. Connect Power Cable to Drive Interface Board



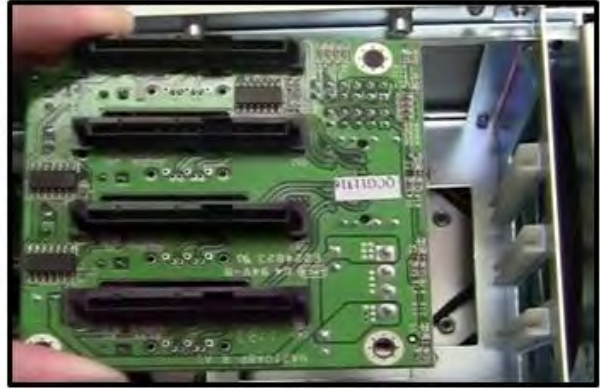
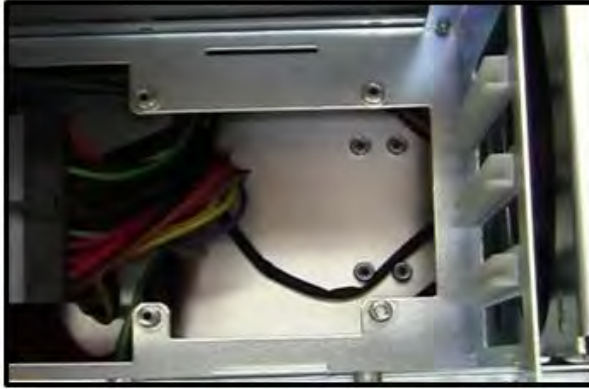
2. Connect SAS / SATA Cable to Interface Board



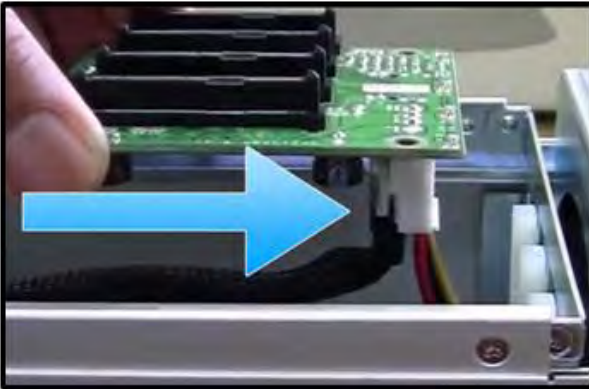
3. Connect EB3T Aux Cable to Interface Board Power Cable



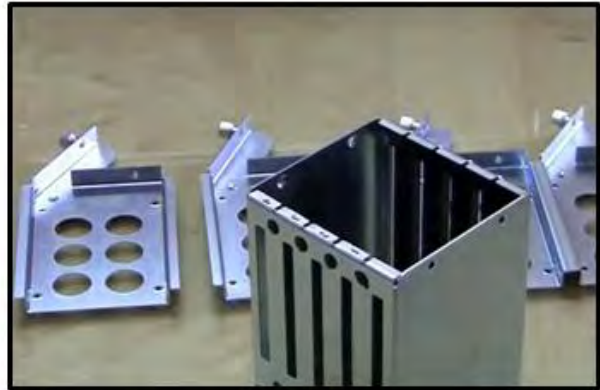
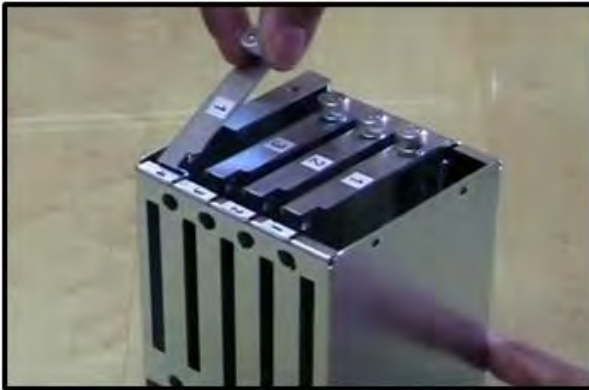
4. Mount Interface Board



5. 4pin Connector is closer to the front fan as shown from the picture below. Secure the Interface board.



6. Remove all 4 Drive Trays as shown from the pictures below.



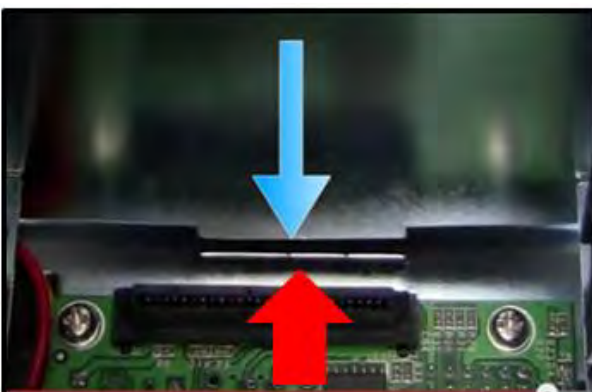
7. Install Drive Cage as shown from the pictures below.



8. The Label orientation should be far away from the Front fan.



9. Align and latch Metal Tab in SLOT.



10. Secure Drive Cage / Housing



11. Place drive inside the tray as shown from the pictures below.



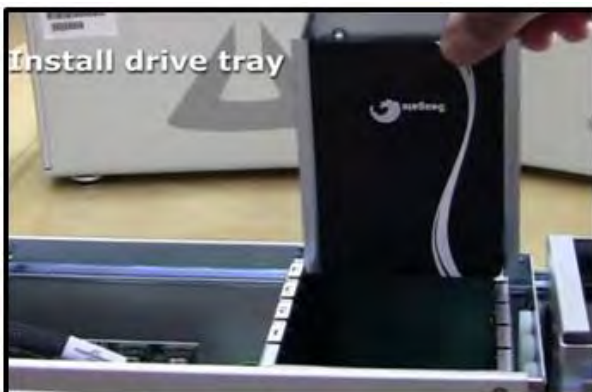
12. Turn the tray over and secure the drive.



13. Drives are now ready



14. Install Drive Tray



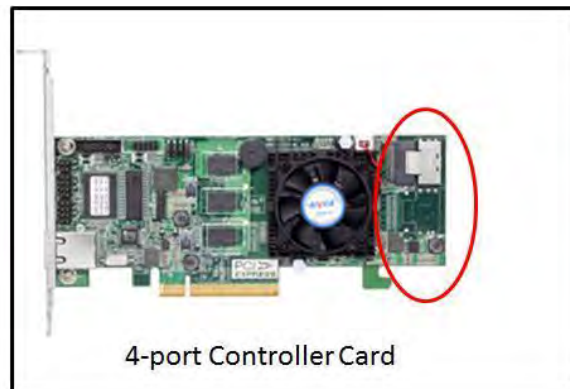
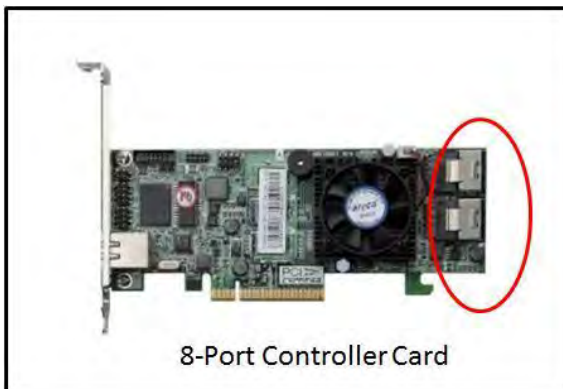
15. Secure all drive trays.



Controller Card Installation

Use a disk controller card that can support 4 drives. We recommend using Areca Controller card or a PCIe controller card that is supported by Windows Operating system and Apple Mac OS X. for Mac OS, make sure it has an Apple Thunderbolt compatible driver. Below are pictures of two Arecas PCIe Controller cards.

1. 8-port Controller card support 8 drives.
2. 4-port Controller card support 4 drives.



1. Connect the SAS / SATA Cable to controller card.



2. Plug in Controller Card and secure it.



How to Configure SAS / SATA Raid



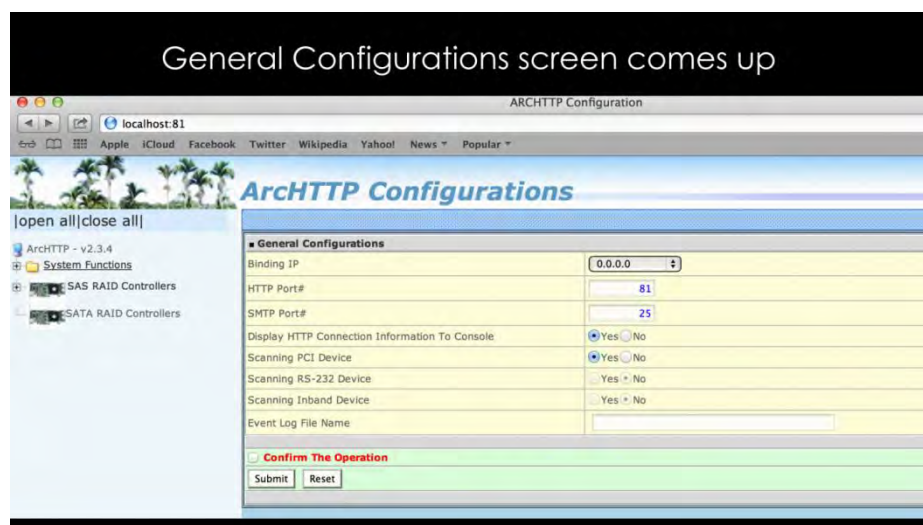
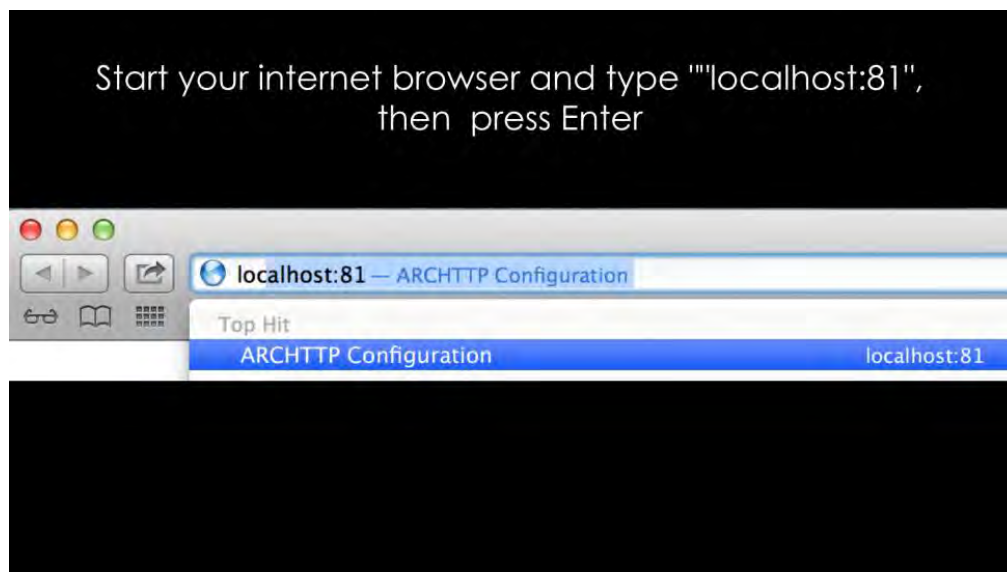
IMPORTANT

This chapter describes how to configure the disk controller card. This software configuration is specific only to vendor **Areca**. Different vendors (i.e. ATTO, Intel, LSI and etc.) of disk controller cards have their own software utility for RAID configuration and management. If you are using a non-Areca card make sure to check with the vendor or manufacturer of the card for further instructions.

Areca has its own Graphical User Interface for RAID configuration and management. You need to install Archttp first, follow the instructions below

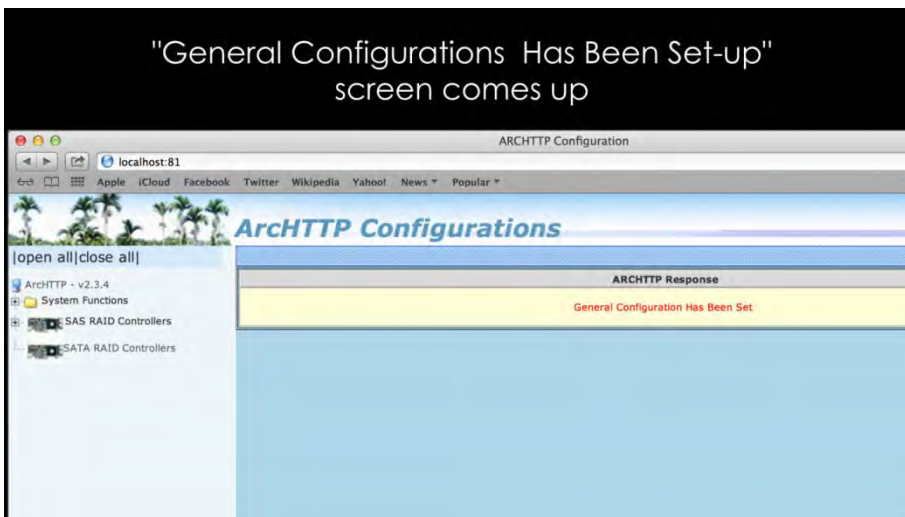
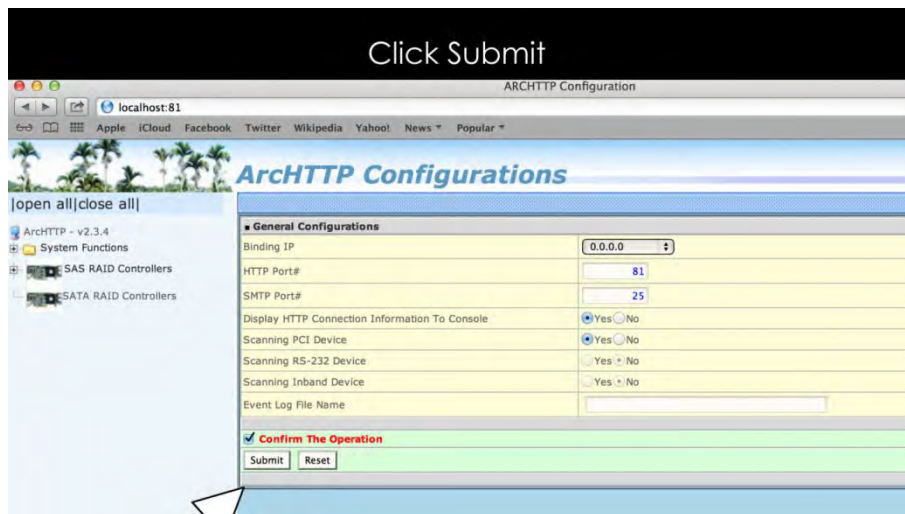
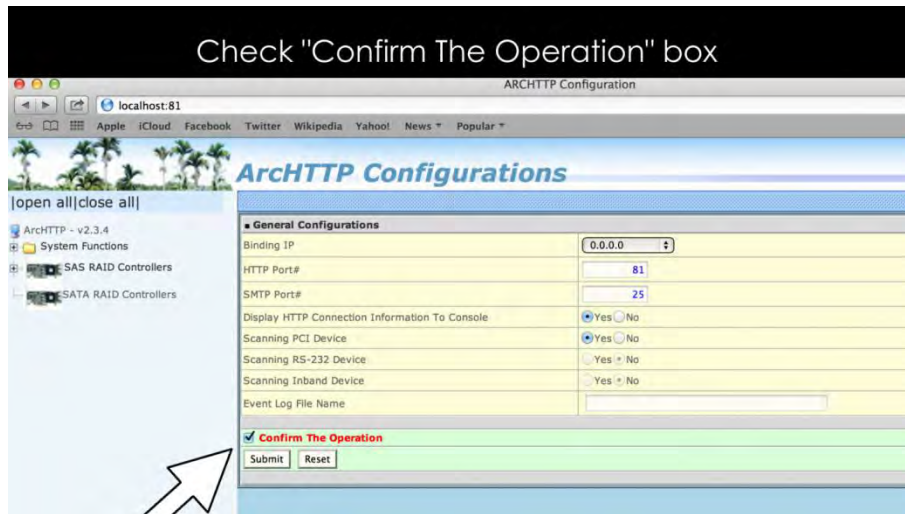
1. Go to <http://www.areca.com.tw>
2. Click Support & Downloads
3. Go to Driver / Utility, select Windows
4. Under "Windows-ArchHTTP" click, Version V2.3.4 to download
5. Save File "winhttp_V2.3.4_130325.zip"
6. Extract the File
7. Click Install.exe to install Archttp
8. After Installation, shutdown computer. Connect Thunderbolt cable to Magma EB3T and computer.
9. Turn on the computer

NOTE: These steps are applicable to Windows 7, Windows 8 and Mac OSx. Use Firefox / Mozilla as your Browser to launch the ARCHTTP.

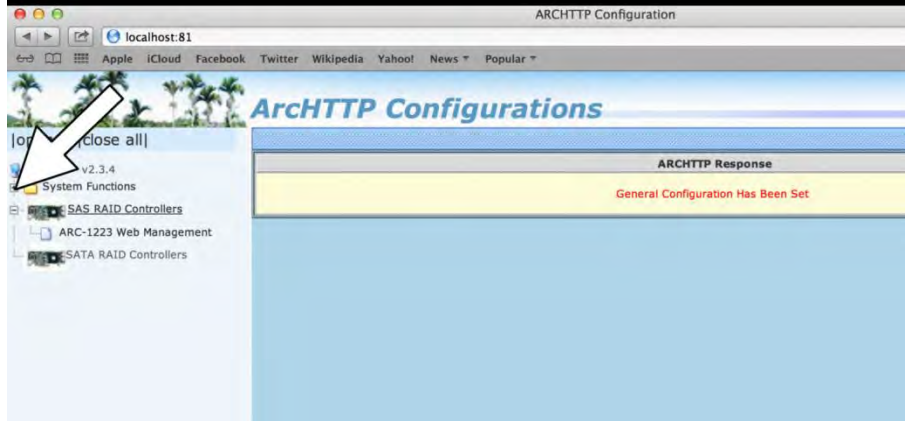


If you are unable to start or launch the Areca Web Management do these steps:

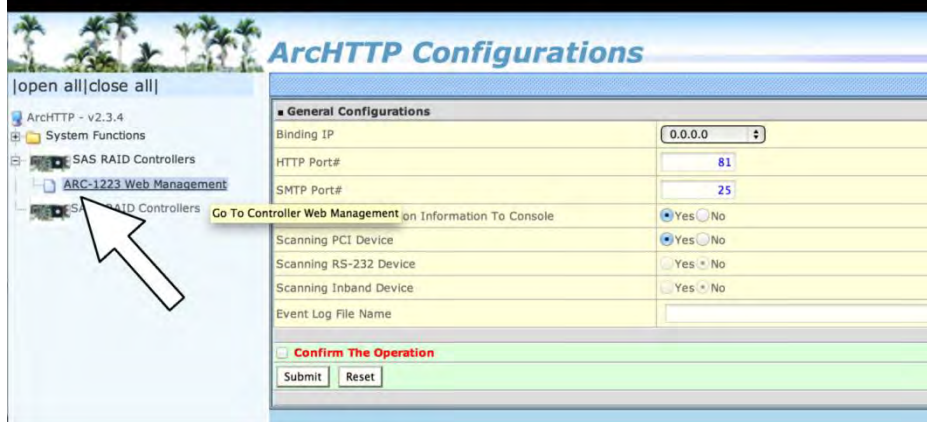
1. Clear Internet History. Reset Internet to default setting.
2. Shutdown computer. And unplug power from Magma EB3T.
3. Disconnect Thunderbolt Cable
4. Remove and reseal Areca controller card.
5. Reconnect power and Thunderbolt cable.
6. Turn on the computer. Start Internet browser and type "Localhost:81"



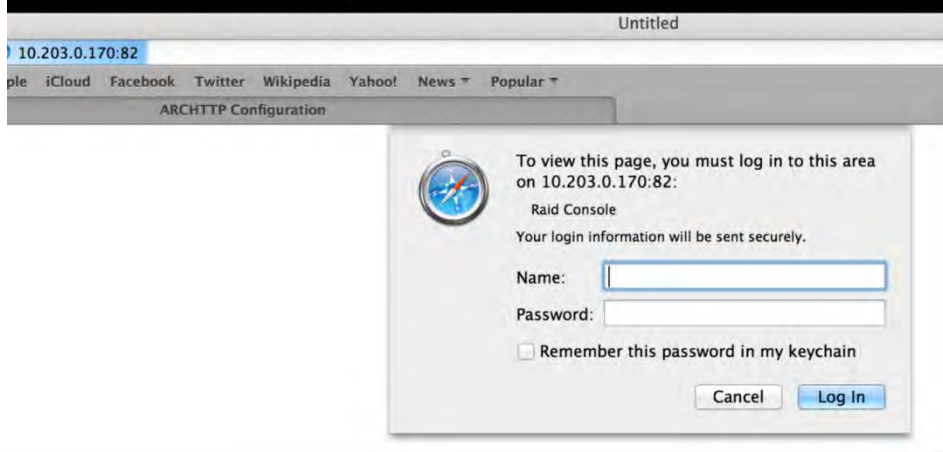
Expand + sign "SAS RAID Controllers"

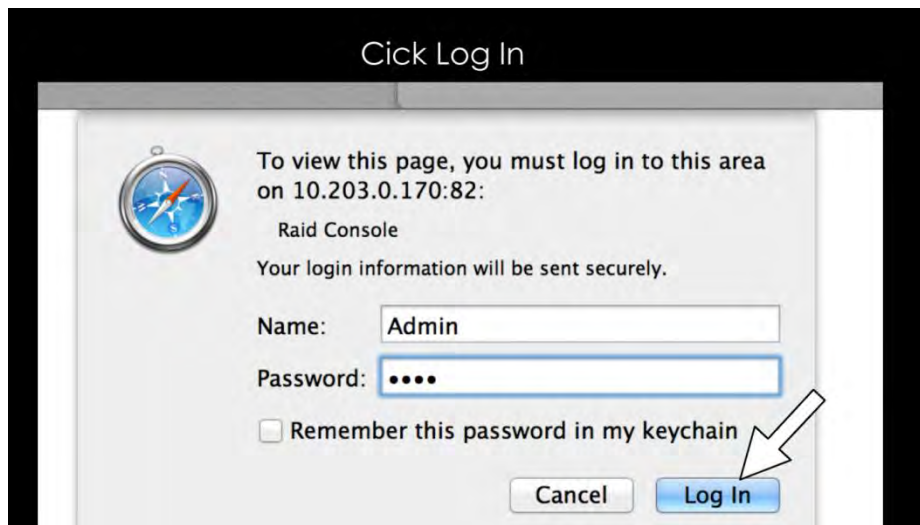
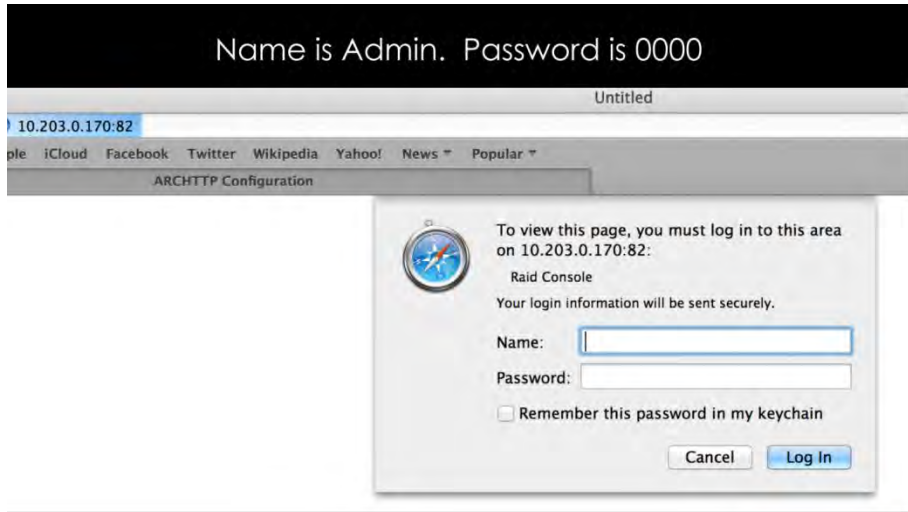


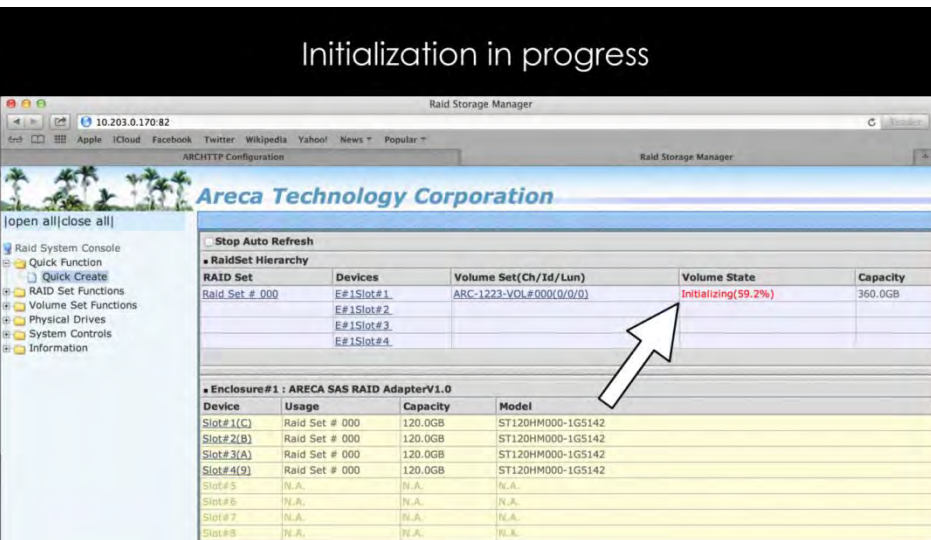
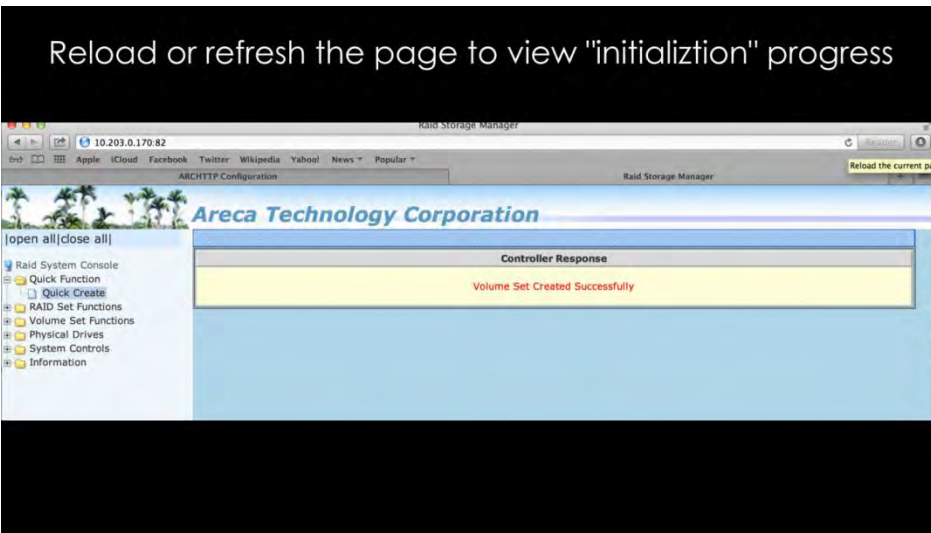
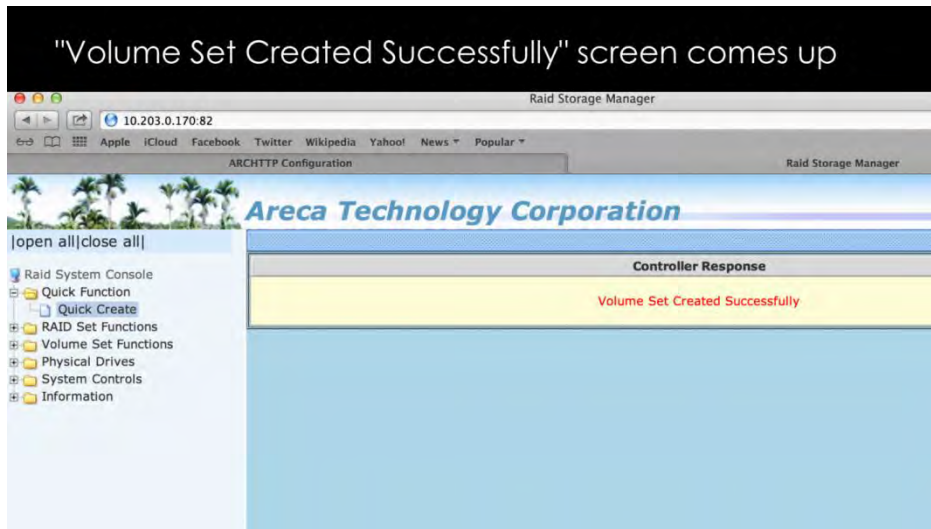
Click "ARC-1223 Web Management"



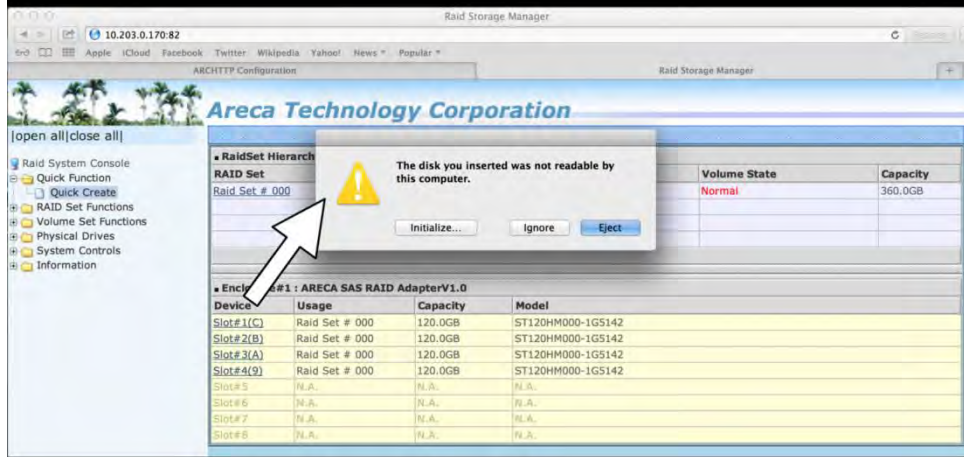
Name & Password screen comes up



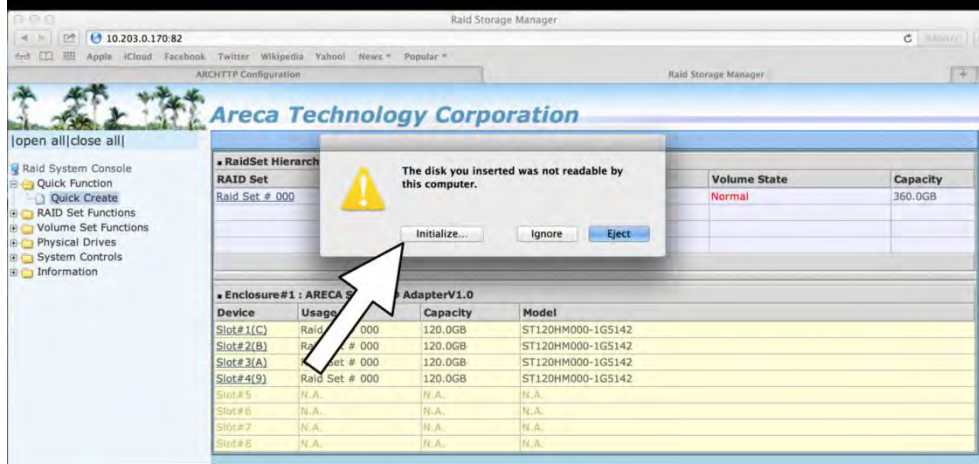




When initialization is done, this warning box comes up



Click "Initialize"



After completing the Raid setup you must activate the drive and create partition. Different Operating Systems have their own utility for creating partitions. On Mac OS you have to use the Disk Utility. On Windows you have to use Disk Management.



IMPORTANT

"The Disk Utility on Mac OSx and Disk Management on Windows OS" are applicable to all disk controller cards / vendors.

Chapter 3 Verify Installation

Hardware

Check the status of the LEDs on the Interface cards and backplane to verify good connection or link between your host computer and expansion unit.

1. Thunderbolt™ 1 interface card : 5 solid green LEDs are illuminated and three solid green LEDs on the backplane. For more details see “Thunderbolt™ 1 Interface Card LEDs” below.
2. Thunderbolt™ 2 Interface Card: 7 solid green LEDs are illuminated and 3 solid green LEDs on the backplane. For more details go to “[Thunderbolt™ 2 Interface Card LEDs on page 20](#)”.

Thunderbolt™ 1 Interface Card & LEDs

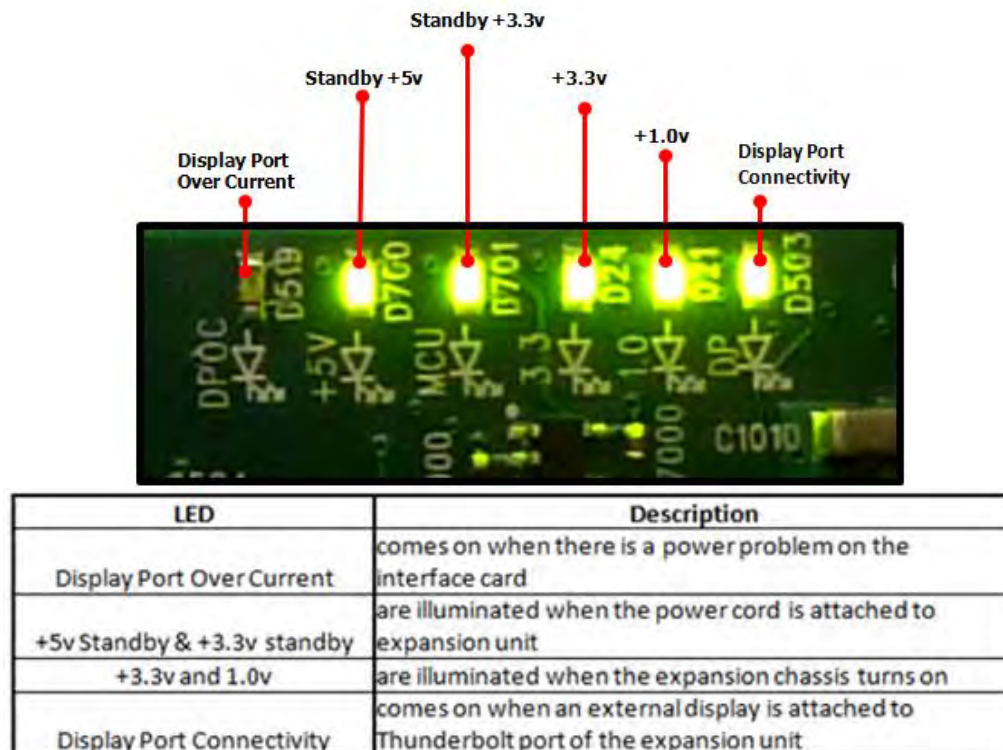
When the Thunderbolt™ 1 Interface card is fully operational and with an external Display device attached, 5 green LEDs are illuminated (solid green), see FIGURE T1-A .



IMPORTANT

If you are only seeing Two Green LEDs that are illuminated on the Thunderbolt Interface card after the Magma Roben-3 is turned on, this indicates that there a hardware failure within your expansion unit. Check your Thunderbolt cable, make sure it is connected firmly and the Thunderbolt Interface card is seated in the PCIE slot properly.

FIGURE T1-A



**IMPORTANT**

If there is no Display Monitor attached to Thunderbolt™ 1 Interface card it would only show 4 illuminated solid GREEN LEDs, this is normal. See picture below.

FIGURE T1-B

**IMPORTANT**

LEDs D700 and D701 on the Thunderbolt™ 1 Interface card are illuminated when power cord is attached to expansion unit. This means the expansion unit is on standby-mode. See picture below.

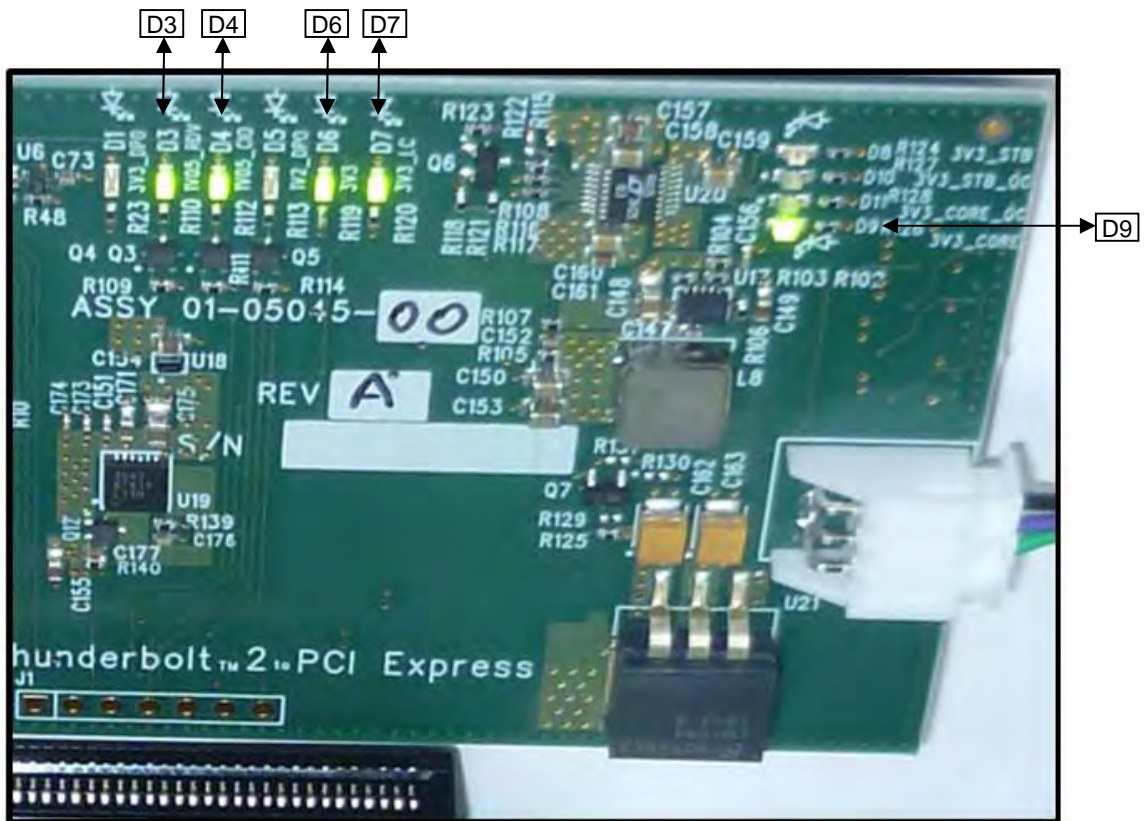
FIGURE T1-C



If there is no Display Monitor attached to Thunderbolt™ 2 Interface card it would only show 5 illuminated solid GREEN LEDs (D3, D4, D6, D7 and D9), this is normal. See FIGURE T2-B below.

If you reconnected an external Display device, LEDs D1 and D5 should come on immediately. Otherwise, the Thunderbolt™ 2 Interface card is not properly working or the monitor Displayport cable is faulty.

FIGURE T2-B

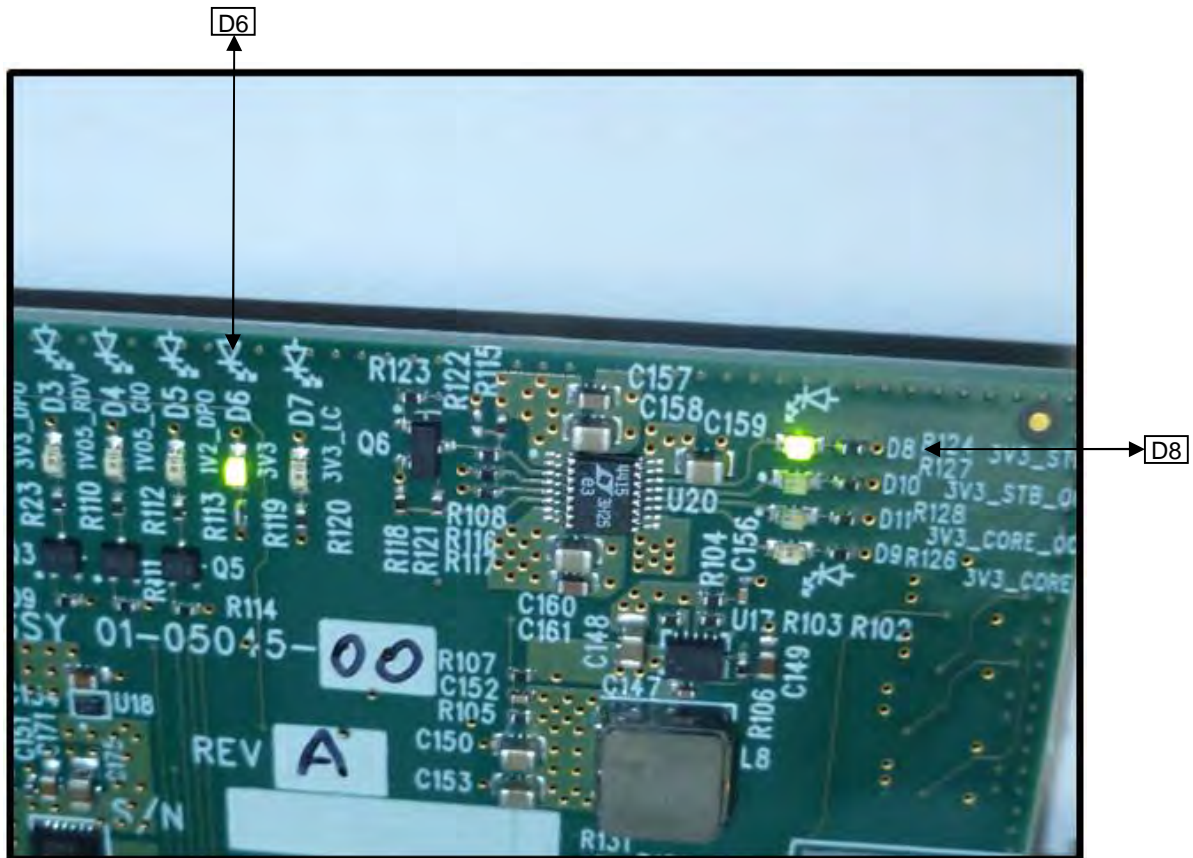


Thunderbolt™ 2 Interface Card LEDs: Functional Mode - without external display device attached



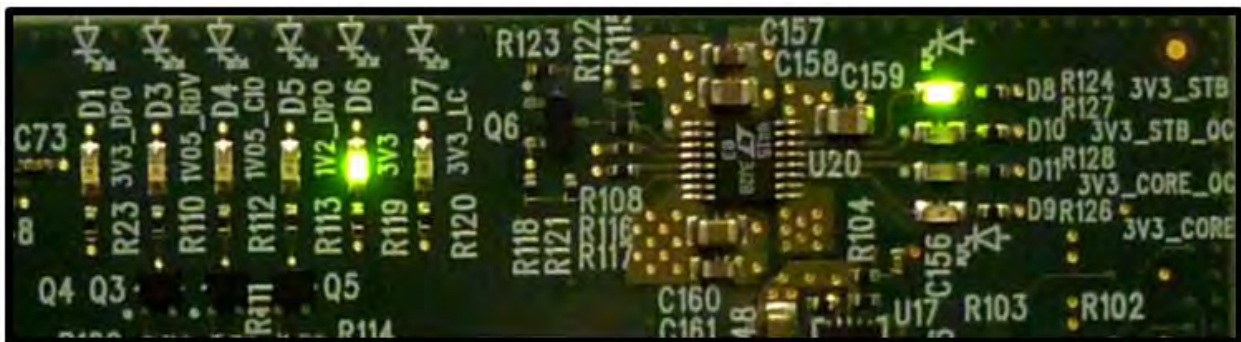
LEDs D6 and D8 are illuminated when power cord is attached to expansion unit. This means the expansion unit is on standby-mode. See picture below.

FIGURE T2-C



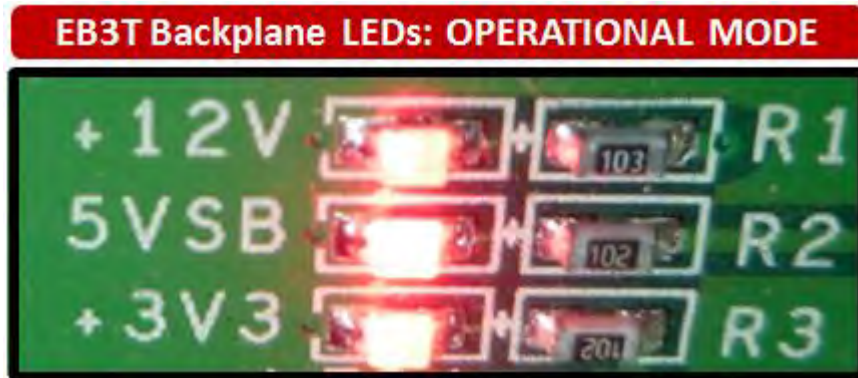
If the above LEDs are not coming ON, please check the power standby cable make sure it is firmly connected to Thunderbolt Interface card power connector (J7). See page 25.

Thunderbolt™ 2 Interface Card LEDs: Standby-Mode



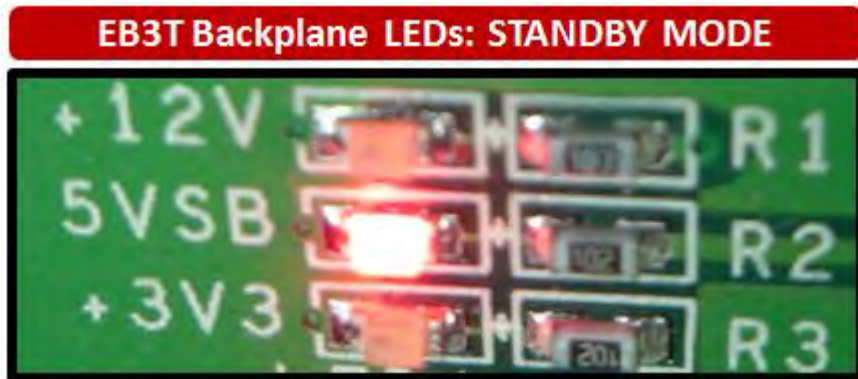
Backplane & LEDs

A functional / operational backplane will illuminate three **solid RED LEDs**. See picture below.



One solid green LED on the backplane signifies "standby mode". The magma device is "switched off" on the electronic interface (but it draws some power) on standby mode. It is waiting to be activated by a remote power or remote controller.

See picture below.



IMPORTANT

If the above three RED LEDs are not coming ON, you may be having a faulty power supply unit or defective backplane.

Software

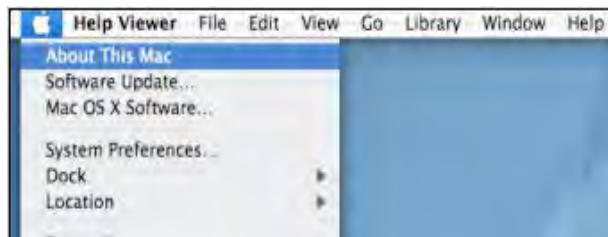
How to check Magma device - Mac OS X



IMPORTANT

Magma requires no driver in Apple Mac Operating System.

To verify a successful installation of Magma Roben-3 on Mac select “About This Mac” under the Apple Icon.



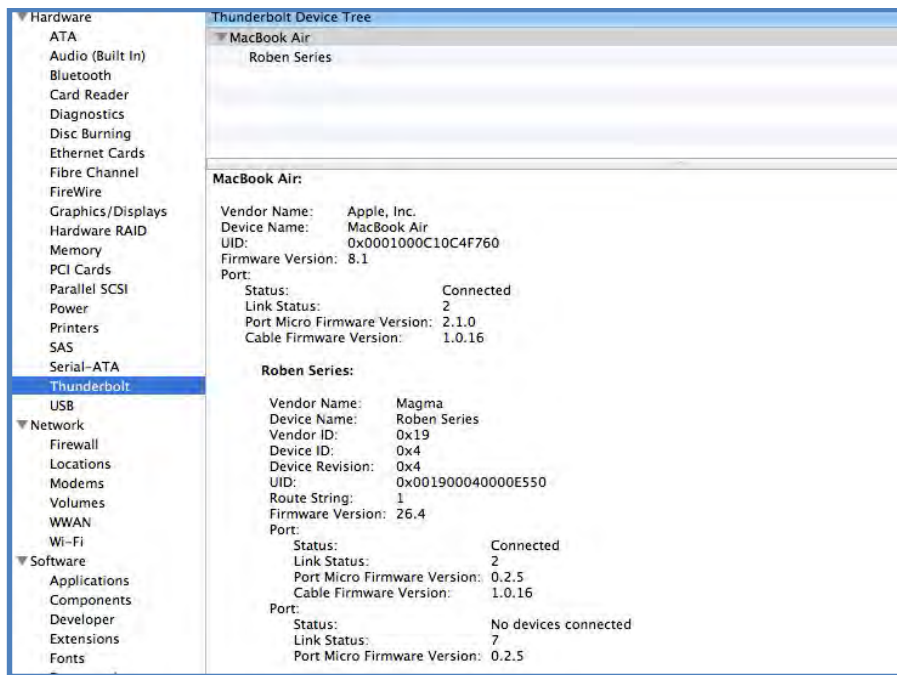
1. Your first step will vary depending on which version of Mac OS X you are using:

Mac OS X 10.6.8 Snow Leopard or earlier:

- Open Apple System Profiler by choosing About this Mac from the Apple () menu. Then, click More Info.

OS X Lion 10.7 or later:

- Open System Information by choosing About this Mac from the Apple () menu. Then, click System Report
2. Click Thunderbolt. This picture below applies to **Thunderbolt™ 1** device.



The picture below applies for **Thunderbolt™ 2**. “Tbolt2 Series” is the new device name for Thunderbolt™ 2.



IMPORTANT

Thunderbolt™ 2 requires Mac OS 10.9 and above. It is highly recommend to update your Mac to the latest Operating system before using the Thunderbolt™ 2 hardware.

MacBook Pro

Hardware

- ATA
- Audio
- Bluetooth
- Camera
- Card Reader
- Diagnostics
- Disc Burning
- Ethernet Cards
- Fibre Channel
- FireWire
- Graphics/Displays
- Hardware RAID
- Memory
- PCI Cards
- Parallel SCSI
- Power
- Printers
- SAS
- SATA/SATA Express
- SPI
- Storage
- Thunderbolt**
- USB

Network

- Firewall
- Locations
- Volumes
- WWAN
- Wi-Fi

Software

- Accessibility
- Applications
- Components
- Developer

Thunderbolt Device Tree

- Thunderbolt Bus
 - Tbolt2 Series

Tbolt2 Series:

Vendor Name: Magma
 Device Name: Tbolt2 Series
 Vendor ID: 0x19
 Device ID: 0x1
 Device Revision: 0x1
 UID: 0x0019000800001310
 Route String: 1
 Firmware Version: 22.1

Port (Upstream):
 Status: Device connected
 Link Status: 0x2
 Current Link Width: 0x2
 Cable Firmware Version: 1.0.16
 Cable Serial Number: C4M32240026F798A9
 Link Controller Firmware Version: 0.14.0

Port:
 Status: No device connected
 Link Status: 0x7
 Current Link Width: 0x1
 Link Controller Firmware Version: 0.14.0

How to Check Magma Device - Windows 7 and 8

Open ACPI (BIOS) → Open PCI Bus → Click the '+' sign several times until you reach a PCI Express Root Port with a PCI Standard PCI-to-PCI Bridge beneath it.

If the verification is successful, you can install 3rd Party cards as well as auxiliary peripherals, such as hard drives into the chassis.

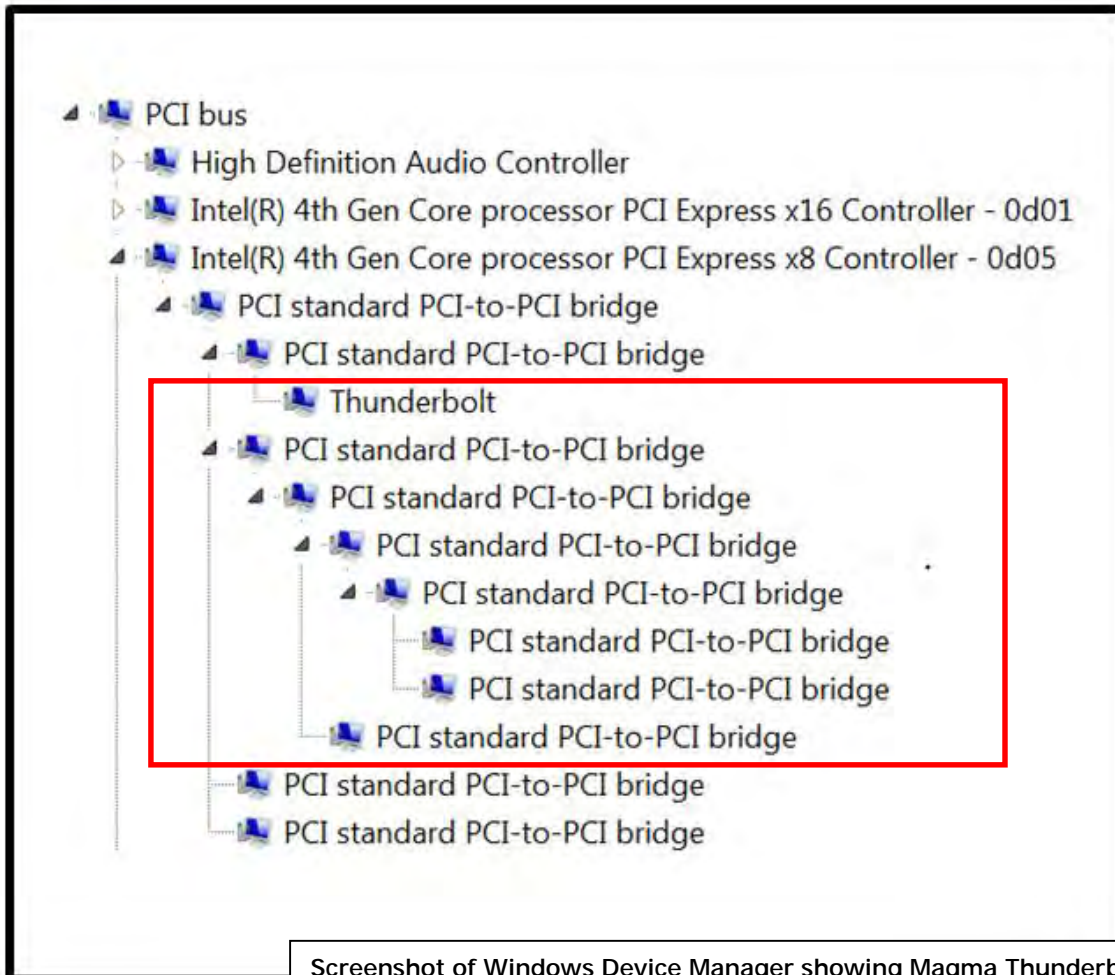
If, however, the installation was unsuccessful, you may not see the PCI to PCI Bridge, or it will have a small yellow symbol in front of it as shown below.



IMPORTANT

Magma requires no driver in Windows Operating System, Unix OS, Linux and other flavor of Operating Systems.

This applies to Thunderbolt™ 2 and Thunderbolt™ 1



Screenshot of Windows Device Manager showing Magma Thunderbolt Expansion device is being recognized / detected (*No PCIe cards installed*).

How To Check PCIe cards - Mac OS X



IMPORTANT

For Mac OS, a driver modification is required from the PCIe card provider. A Mac OS driver that is “Thunderbolt Aware” is required so the PCIe hardware will be recognized by Mac OS through Thunderbolt™ Technology

1. Your first step will vary depending on which version of Mac OS X you are using:

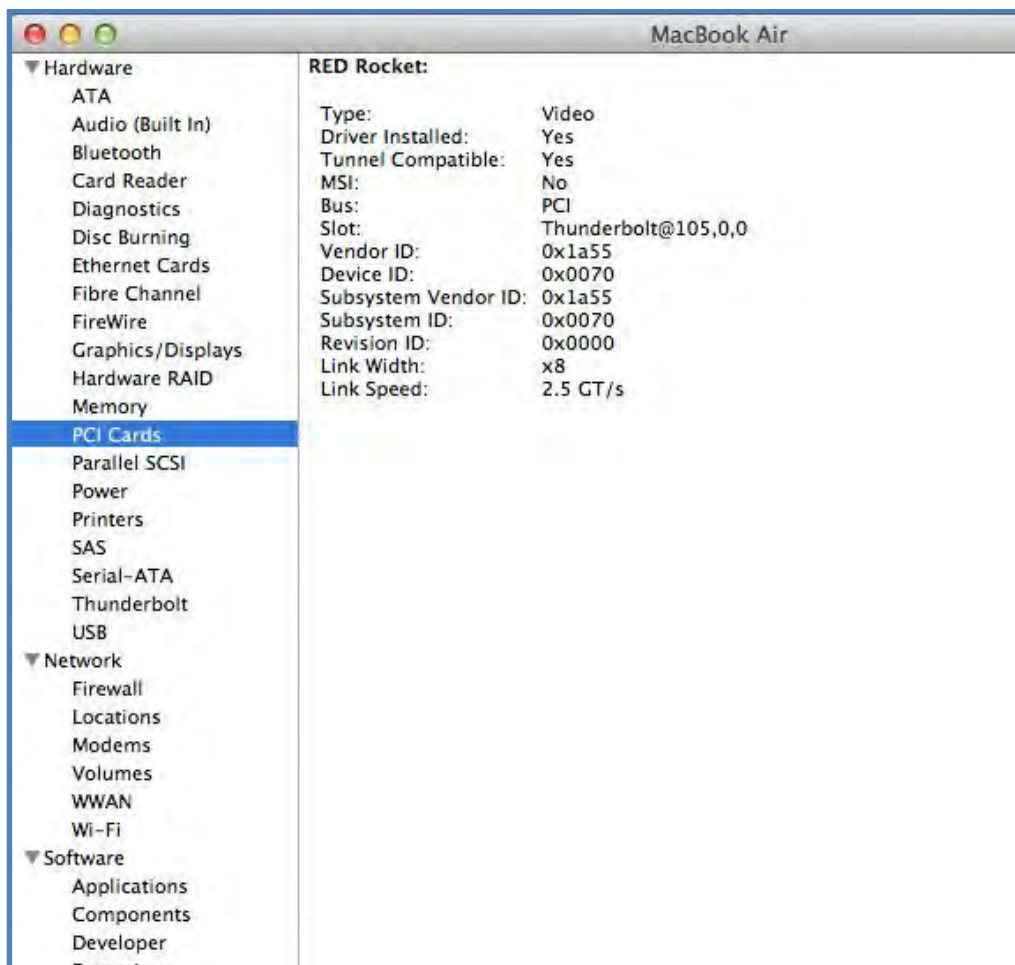
Mac OS X 10.6.8 Snow Leopard or earlier:

- Open Apple System Profiler by choosing About this Mac from the Apple () menu. Then, click More Info.

OS X Lion 10.7 or later:

- Open System Information by choosing About this Mac from the Apple () menu. Then, click System Report
2. Click PCI cards

This applies to Thunderbolt™ 2 and Thunderbolt™ 1.

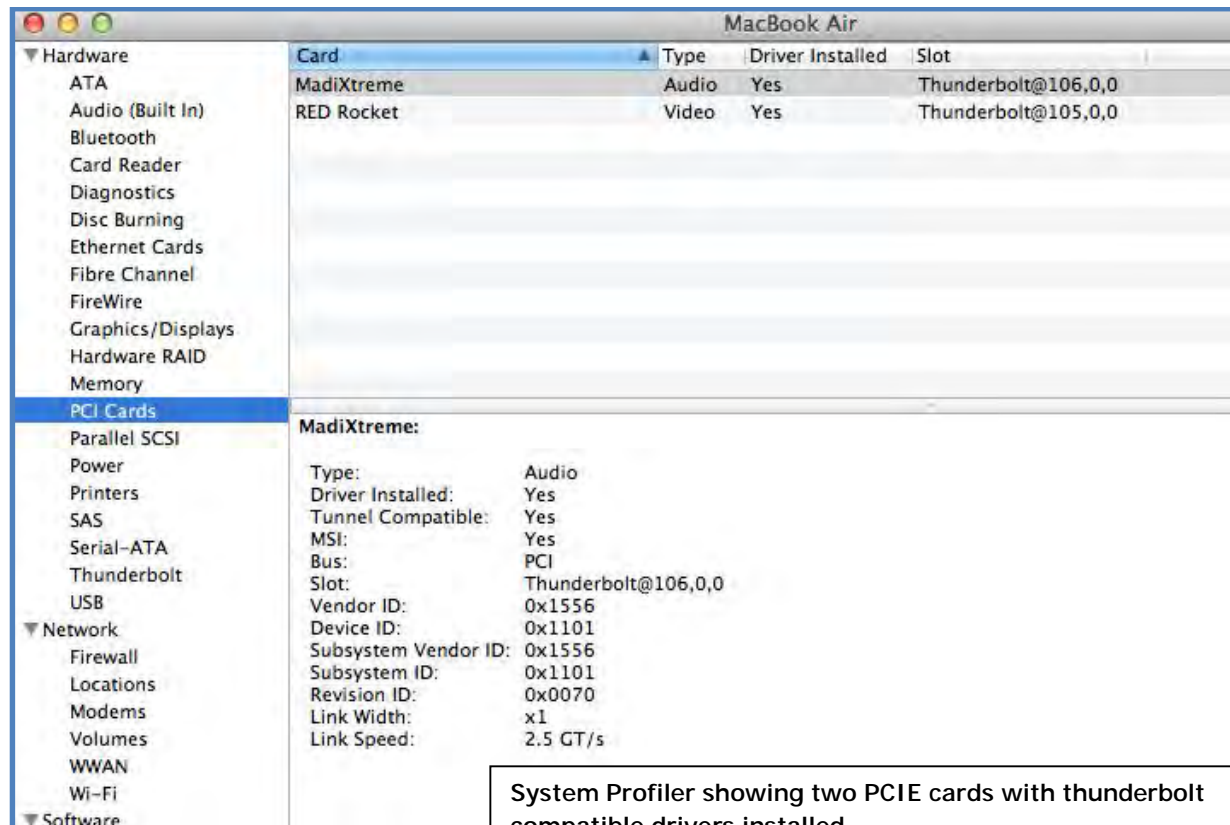


Thunderbolt Aware Driver is required for PCIe cards

For Mac OS, a Thunderbolt Aware (Compatible) driver is required because it allows PCIe cards to be detected in Roben-3. Ensure you have a “Thunderbolt Aware or Thunderbolt Compatible” driver from the PCIe card manufacturer otherwise the PCIe card will not be functional.

If the driver is installed, make sure it supports Thunderbolt. If the driver does not support Thunderbolt you will see a message “Driver Installed: No

Click on the specific PCIe card in question to see if it's Thunderbolt Compatible. If it shows “Yes” then it's compatible, if it shows “No”, the PCIe card will not be visible in Roben-3.



The screenshot shows the System Profiler window for a MacBook Air. The left sidebar is expanded to 'PCI Cards'. The main pane displays a table of installed PCIe cards:

Card	Type	Driver Installed	Slot
MadiXtreme	Audio	Yes	Thunderbolt@106,0,0
RED Rocket	Video	Yes	Thunderbolt@105,0,0

Below the table, the details for the selected 'MadiXtreme' card are shown:

```

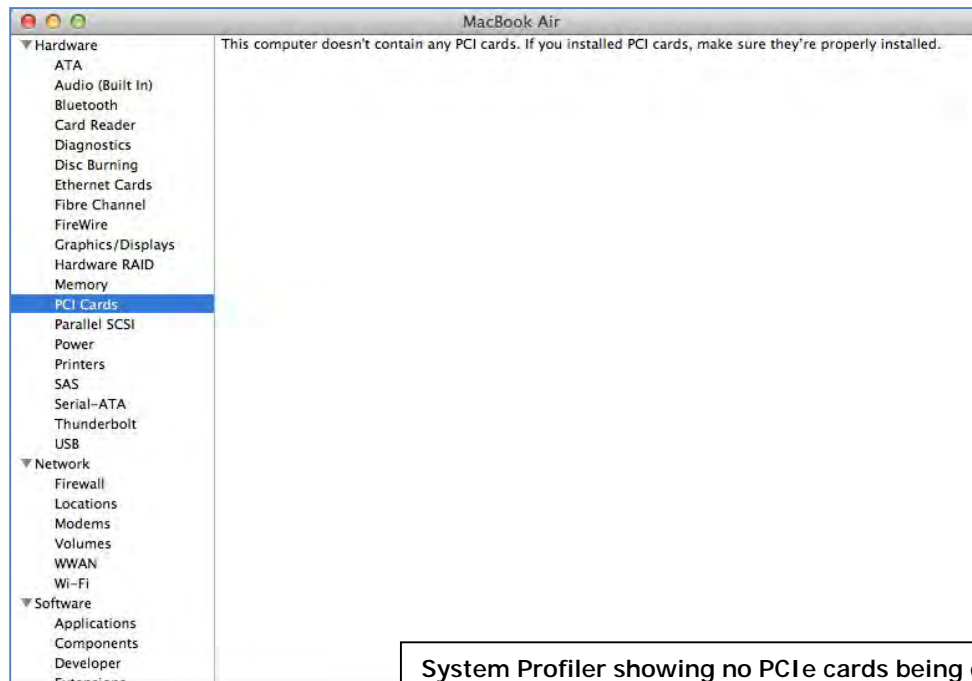
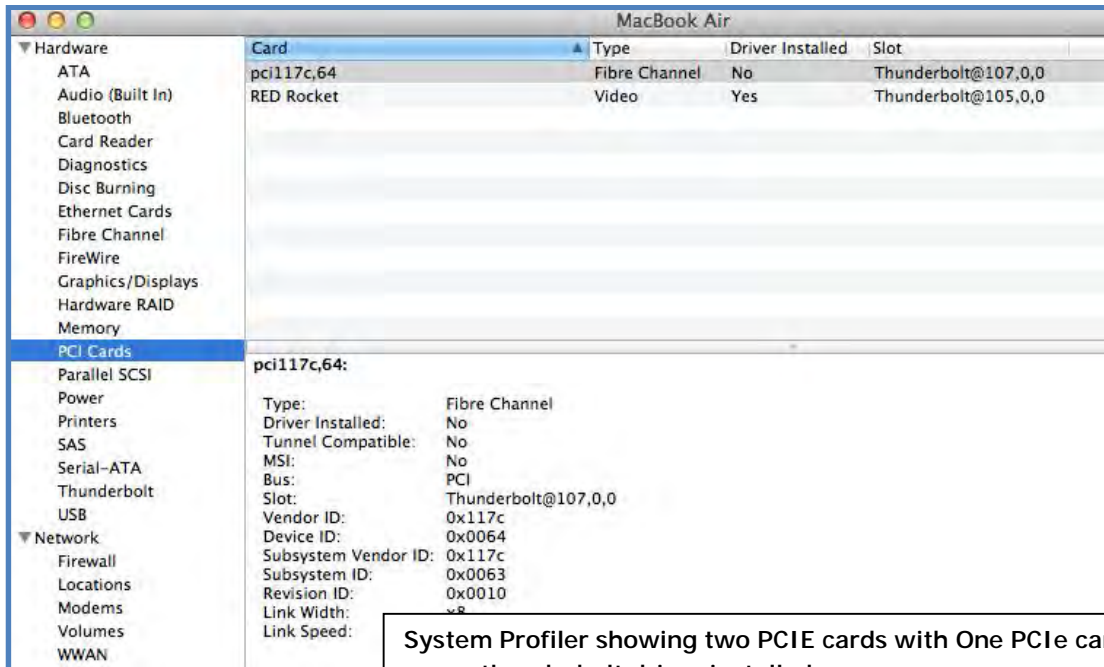
MadiXtreme:
Type: Audio
Driver Installed: Yes
Tunnel Compatible: Yes
MSI: Yes
Bus: PCI
Slot: Thunderbolt@106,0,0
Vendor ID: 0x1556
Device ID: 0x1101
Subsystem Vendor ID: 0x1556
Subsystem ID: 0x1101
Revision ID: 0x0070
Link Width: x1
Link Speed: 2.5 GT/s
  
```

A callout box at the bottom right of the screenshot contains the text: "System Profiler showing two PCIe cards with thunderbolt compatible drivers installed".



NOTE

Magma does not provide nor supply any third party PCIe drivers. If you need driver you must contact the vendor or manufacturer of the PCIe card. If you would like to determine whether the 3rd party PCIe card has a Thunderbolt Compatible driver or not you must also contact the vendor or manufacturer of the PCIe card.



System Profiler showing no PCIe cards being detected or recognized.

Card	Type	Driver Installed	Slot
pci1a00,1	Other Multimedia	No	Thunderbolt@105,0,0
pci11af,ef70	Other Multimedia	Yes	Thunderbolt@106,0,0
pci11af,ef70	Other Multimedia	Yes	Thunderbolt@107,0,0

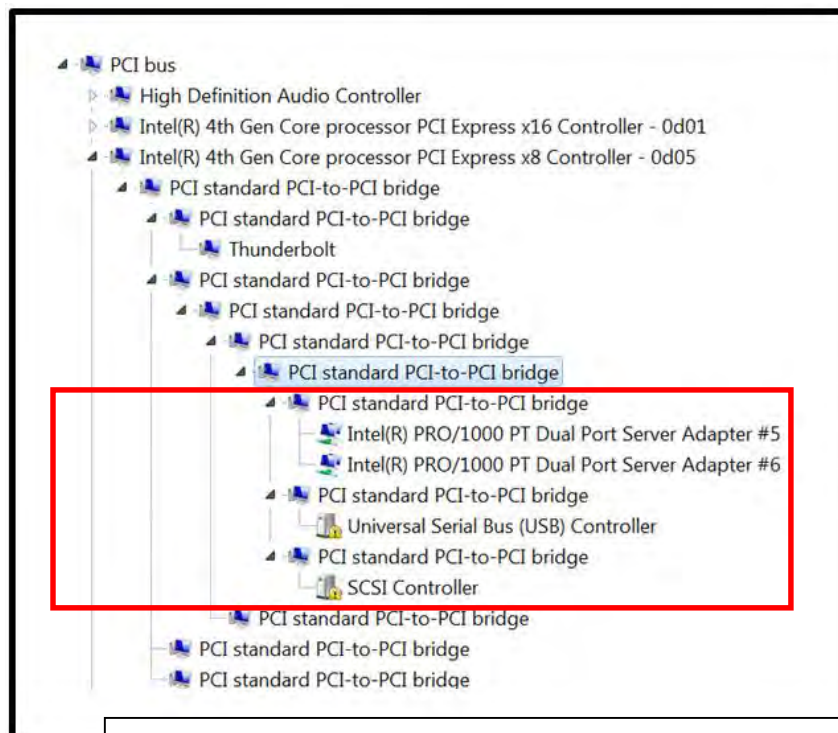
How to Check PCIe cards – Windows 7 and 8

Open ACPI (BIOS) → Open PCI Bus → Click the '+' sign several times until you reach a PCI Express Root Port with a PCI Standard PCI-to-PCI Bridge beneath it.

If the verification is successful, you can install 3rd Party cards as well as auxiliary peripherals, such as hard drives into the chassis.

If, however, the installation was unsuccessful, you may not see the PCI to PCI Bridge, or it will have a small yellow symbol in front of it as shown below.

This applies to Thunderbolt™ 2 and Thunderbolt™ 1_expansion units.

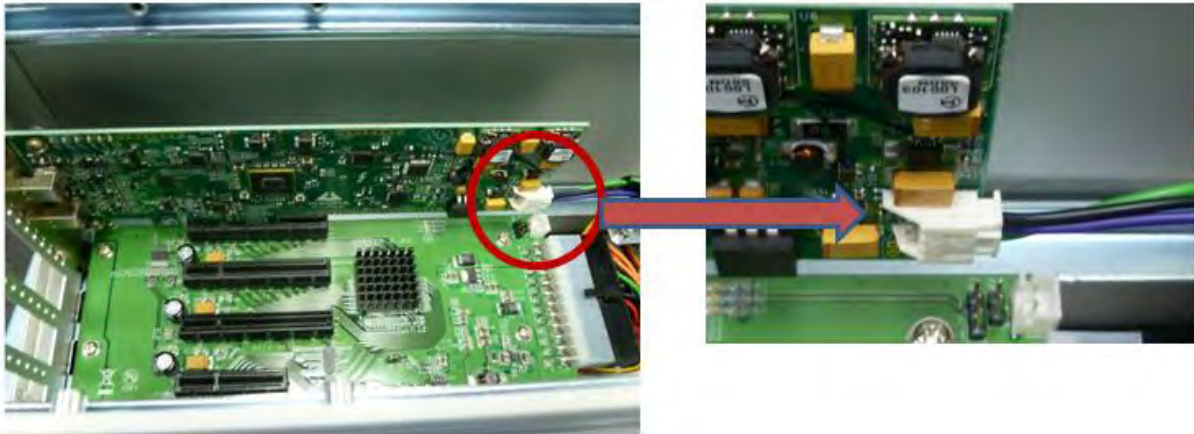


Screenshot of Windows Device Manager showing Magma EB3T Expansion device is being recognized / detected and with PCIe card installed.

Troubleshooting

Q: If the Thunderbolt card fails to power up, what should I check?

A: Check the power stand-by cable; make sure it is firmly connected to the power receptacle of the Thunderbolt Interface card.



Q: How do I know if ExpressBox 3T power supply is working?

A: If the Thunderbolt card is properly seated and connected, there should be two green LEDs (shown) when black power cable is plugged in, as shown below.



Q. If ExpressBox 3T does not power up how do I determine whether I have a bad power supply, a bad interface card or defective cable?

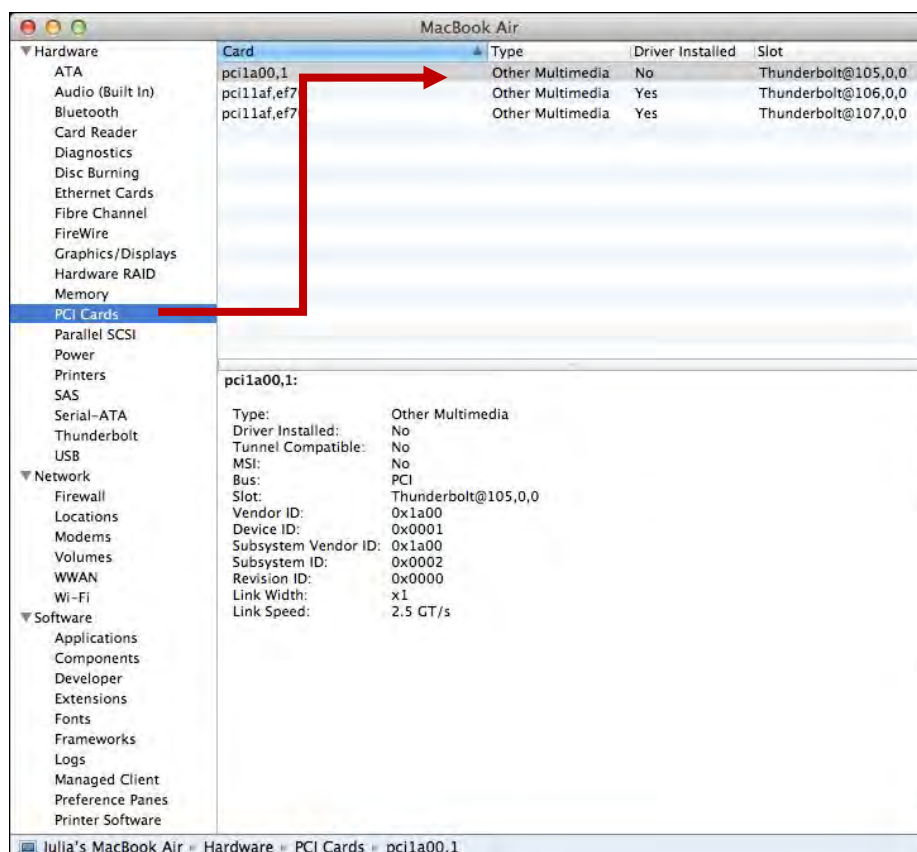
A: A working system should illuminate - Five Green LEDs D519, D7000, D701, D24 AND D21 on the interface card, which are located on the top left corner.

- When you have a Bad Power Supply, you won't see any Green LEDs lit at all on the Interface card.

- When you have a bad cable, you don't see LEDs D701, D24 AND D21 coming on. Swap or replaced the Thunderbolt Cable.
- If you already swapped the Thunderbolt cable and still LEDs D701, D24 AND D21 are not coming on this indicates you have a bad interface card.

Q: How can I determine if the driver for my PCIe card is Thunderbolt Compatible?

A: Thunderbolt Tunneling is required for Mac OS. In Apple System Profile, click on the specific PCIe card in question to see if it's Thunderbolt Tunnel Compatible. If it shows "Yes" then Thunderbolt tunneling has been enabled. If it shows "No", then the driver does not work through Thunderbolt and the PCIe card will not be visible in ExpressBox 3T.

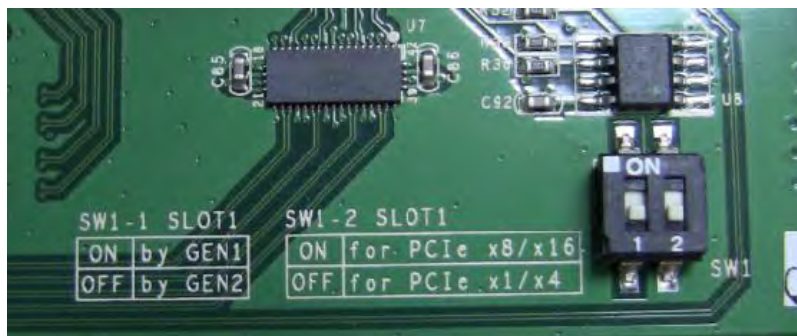


Q. My PCIe card is not getting detected when installed in 1st PCIE slot, what should I do?

A. You have to configure the DIP Switch (SW1) on the backplane, setting it to proper configuration to match the PCIe card specs.

This troubleshooting is only applicable to **Rev A5.1 backplane**. The main function of this DIP Switch is as follows

- To set the 1st PCIe slot to train to either GEN1 or GEN2
- To allow a x8 or x16 PCIE card to run under x4 slot



1. If you are installing an X8 – Gen1 PCIe card: set SW1 to ON and SW2 to ON
2. If you are installing an x8 – Gen2 PCIe card: set SW1 to OFF and SW2 to ON
3. If you are installing an X4 – Gen1 PCIe card: set SW1 to ON and SW2 to OFF
4. If you are installing an x4 - Gen2 PCIe card: set SW1 to OFF and SW2 to OFF

NOTE: Default setting: 1= OFF; 2= OFF

Q: Can I daisy chain ExpressBox 3T with more ExpressBox 3T?

A: Yes, but realize that aggregate bandwidth is limited to 10Gbps through the Thunderbolt port and PCI address and IO space can be limited so the type of cards installed in the chassis may limit the number that can be daisy chained successfully.

If a daisy chain device doesn't work; check to see if a RED led (on the Magma Thunderbolt Card in the first slot of ExpressBox 3T) is on. If so, the daisy chained device is drawing too much power and the current limiting has kicked in and has turned off the power to the downstream device.

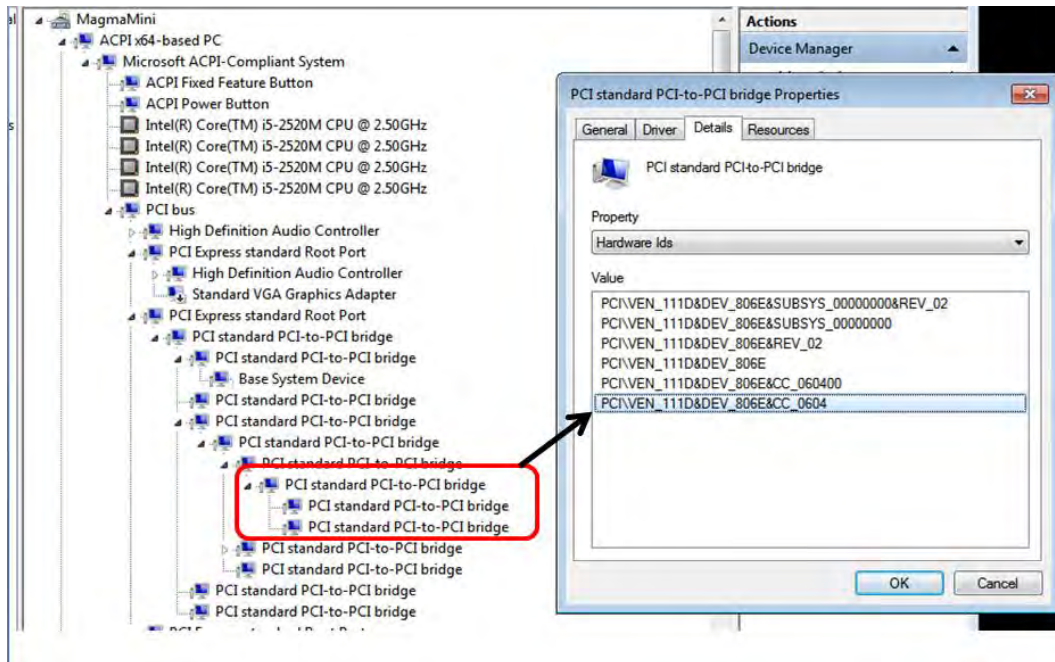
Q: Will ExpressBox 3T show up in Apple System Profiler or Windows Device Manager without any PCIe cards installed?

Yes. In Apple System Profiler à Thunderbolt à Status: Connected à ExpressBox 3T



In Windows → Control Panel → Device Manager → View by connection

You should see these three PCI-to-PCI bridges. Right click on it and select "Properties", select Hardware Ids from dropdown list, you should see PCI\Ven_111D



Chapter 4 How to Get More Help

You can visit the Magma Technical Support FAQ pages on the Internet at: www.magma.com/support/

Contacting Technical Support

Our support department can be reached by fax at (858) 530-2733 or by phone at (858) 530-2511. Support is available Monday through Friday, 8:00 AM to 5:00 PM PT. When contacting MAGMA Technical Support make sure to include the following information:

1. Exact and correct Magma Serial #
2. Service Ticket or Case # (if you already submitted an online request)
3. Computer Type & Model: Operating System
4. Make & Model of PCI/PCIe cards: Application
5. Problem description

When submitting an online technical support request always provide a valid working e-mail address, phone number, shipping address and proper contact name. Check your e-mail for an automated response containing the case # and updates. You can also visit our web site at: www.magma.com/support. For a quick response, use the Technical Support and RMA Request Form available in the Support Section of the website. Simply complete the form with all required information. Please make sure that your problem description is sufficiently detailed to help us understand your problem.

Shipping or Transporting of Expansion Unit with PCI / PCIe cards

Any PCIe cards in **should be removed** (or not to be installed) prior to shipment to avoid or prevent possible damage. Note: Expansion board and PCIe / PCI cards that arrive damaged in shipment will not be covered under warranty.

Returning Merchandise to MAGMA

If factory service is required, a Service Representative will give you a Return Merchandise Authorization (RMA) number. Put this number and your return address on the shipping label when you return the item(s) for service. **Magma will return any product that is not accompanied by an RMA number.** Please note that Magma WILL NOT accept COD packages, so be sure to return the product freight and duties-paid.

Ship the well-packaged product to the address below:

Attention:RMA # _____, MAGMA
9918 Via Pasar
San Diego, CA 92126
USA

It is not required, though highly recommended, that you keep the packaging from the original shipment of your Magma product. However, if you return a product to Magma for warranty repair/ replacement or take advantage of the 30-day money back guarantee, you will need to package the product in a manner similar to the manner in which it was received from our plant. Magma cannot be responsible for any physical damage to the product or component pieces of the product (such as the host or expansion interfaces for the expansion chassis) that are damaged due to inadequate packing. Physical damage sustained in such a situation will be repaired at the owner's expense in accordance with Out of Warranty Procedures. Please, protect your investment, a bit more padding in a good box will go a long way to insuring the device is returned to use in the same condition you shipped it in. Please call for an RMA number first.

Appendix A Compliance

FCC

NOTE: This equipment has been tested and found to comply with the limits for a Class A digital device, pursuant to part 15 of the FCC Rules. These limits are designed to provide reasonable protection against harmful interference when the equipment is operated in a commercial environment. This equipment generates, uses, and can radiate radio frequency energy and, if not installed and used in accordance with the instruction manual, may cause harmful interference to radio communications. Operation of this equipment in a residential area is likely to cause harmful interference in which case the user will be required to correct the interference at his/her own expense.

This device complies with Part 15 of the FCC Rules. Operation is subject to the following two conditions: (1) this device may not cause harmful interference, and (2) this device must accept any interference received including interference that may cause undesired operation.

Changes or modifications not expressly approved by the party responsible for compliance could void the user's authority to operate the equipment.



NOTE

The assembler of a personal computer system may be required to test the system and/or make necessary modifications if a system is found to cause harmful interferences or to be noncompliant with the appropriate standards for its intended use.

Industry Canada

This Class A digital apparatus complies with Canadian ICES-003.

Cet appareil numérique de la classe A est conforme à la norme NMB-003 du Canada

CE

The product(s) described in this manual complies with all applicable European Union (CE) directives. Magma will not retest or recertify systems or components that have been reconfigured by customers



9918 Via Pasar, San Diego, CA 92126, USA

Toll-Free (800) 285-8990 US • Main (858) 530-2511 • Fax (858) 530-2733

www.magma.com

